

ALLAN HERSCHELL

CHANCE
MANUFACTURING CO., INC.

Number:
Date: 28
12-7-72

Superceeds:
Number:
Date:

Service Information

Ride: JOLLY CATERPILLAR RIDE

Subject: ERECTION AND CARE

REFERENCES:

Blueprint JO-1 Assembly Drawing
Blueprint JO-100-P Parts Number Drawing
Blueprint KT-101 Foundation Drawing

ERECTION AND CARE OF JOLLY CATERPILLAR RIDE - MODEL "C"

Refer to photograph and print number JO-1 for general arrangement of parts, and to JO-100-P for part number identification and lubrication instructions.

Select a spot that is reasonably level, especially for the center of the ride. Place the circular center post assembly #JO-31 into position and fasten with three ground stakes #JO-38, or with 3/4" expansion bolts if concrete is used. If a track has been ordered, fasten three tie braces #JO-35 to center post with six 1/2" x 3" long machine bolts, lockwashers and nuts. Then assemble 12 track sections together with 3/4" x 2" long cap screws, lockwashers and nuts. Use six 3/4" expansion bolts or six ground stakes #JO-38 to hold down the three tie braces #JO-35.

Attach two radius arms #JO-36 to centerpost JO-31 with two 3/4" dia. x 5-3/4" long pins #JO-34-5. Connect car end of radius arms to cars #1 and #3 with two 3/4" castle nuts, four special washers and two cotter pins.

Connect cars #1, 2 and 3 with eight 3/4" bolts, nuts and lockwashers per JO-20 and JO-21. Attach three running boards with 3/8" x 1-3/4" bolts, nuts and lockwashers. All necessary bolts, nuts, etc. are furnished and are located in tool box.

Assemble sign #JO-123, and center light pole assembly #JO-121 if ordered.

Locate control box to suit operators convenience. Attach to post and ground plate JO-119, and fasten to ground with ground stakes #JO-38. Cover switch controls with rainproof night cover when ride is not in use.

Assemble fence #JO-39, if ordered and fasten with ground stakes. Cover with canvas night cover when ride is not in use. Connect twist lock electrical connectors between cars for noise makers, also twist lock connectors at switch panel, center post, and at sweep arms, cars, and inside of light pole.

Factory and General Office, 4219 Irving, Box 2397 Wichita, Kansas 67201

Area Code (316) 942-7411

Sales Office:

103 Ross Ave., Dallas, Texas 75202

Area Code (214) 742-3802

CAUTION: The wiring on this ride has been arranged for a separate connection to the lights from that of the drive motor. The ride is designed to run on 60 cycle, 220 volt current (or 110 volts). Satisfactory results might not be obtained on lines having considerable drop in voltage, especially when operating on 110 volt line, and to insure proper operation, voltage of 105 to 115 must be maintained.

Motor connections are for 220 volts when ride leaves factory. If 110 volt current must be used, motor connections must be changed to suit wiring diagram on motor nameplate. Operate the lighting and the horn only on 110 volt, 60 cycle current.

Buzzers for Jolly Caterpillar noise maker operation: If buzzers burn out, remove mounting plate and replace with buzzer of same voltage and cycle. Buzzers are located at side of each seat near Jolly face switchboards. Standard Buzzer equipment on ride is: 24 V, 60 Cycle - Connected 24 volts at transformer for 60 cycle operation. 24 V, 60 cycle - Connected 16 volts at transformer for 25 cycle operation.

Eight Volt blinker eyes and 24 volt buzzer noise makers are operated through a flasher button, (Eagle #D472, 110 volts), a 60 watt and 110 volt lamp, and a transformer with 110 volt 10 amp. fuses on input side and 24 volt 5 amp. fuses on secondary side. This equipment is accessible through a panel located behind the head of the Jolly Caterpillar.

At the factory the fluid drive sheave is given the proper amount of a premium grade of SAE 10 W oil. A change of oil is necessary every five years unless excessive slippage indicates an earlier change is necessary. Check oil level yearly. A slippage of 85 RPM between RPM of motor and the RPM of hydro-sheave is considered standard. The hydro-sheave bearings are lubricated for life.

The fluid sheave has the correct quantity of oil when it is positioned with its 2-1/2" marking at the top center position, which places the plug opening off center. Fill with the proper fluid until oil tends to run out plug opening. Then replace pipe plug. Use Gasket compound on plug threads.

Vertical Shaft Worm Reducer U-300:

- (a) Follow instructions on nameplate, using 600W in warm weather and 1/2 of SAE #40 and 1/2 of 600W in cold weather. Maintain proper level.
- (b) Drain and refill after first 150 hours of operation.
- (c) Use grease gun (furnished) on upper bearing fitting of reducer. Fill with Mobil MP Grease or King Graphite Product #KGP-24.
- (d) Keep breather fitting clean and open.

Use grease gun (furnished) on fitting provided on: (Fill with Mobil MP Grease or King Graphite Product #KGP-24.

- (a) Motor (Ball bearing type only)
- (b) Center post (at rotating head)

Use light machine oil on chain.

Check the "V" Belts on the drive for proper tension. These have been set correctly at the factory, but when new, adjustment should be made frequently until the initial stretch has been taken up. These are not to be too tight and need very little attention during the season. **CAUTION:** Any adjustment of the belt drive should be done with the motor. Do not change the position of the gear reducer.

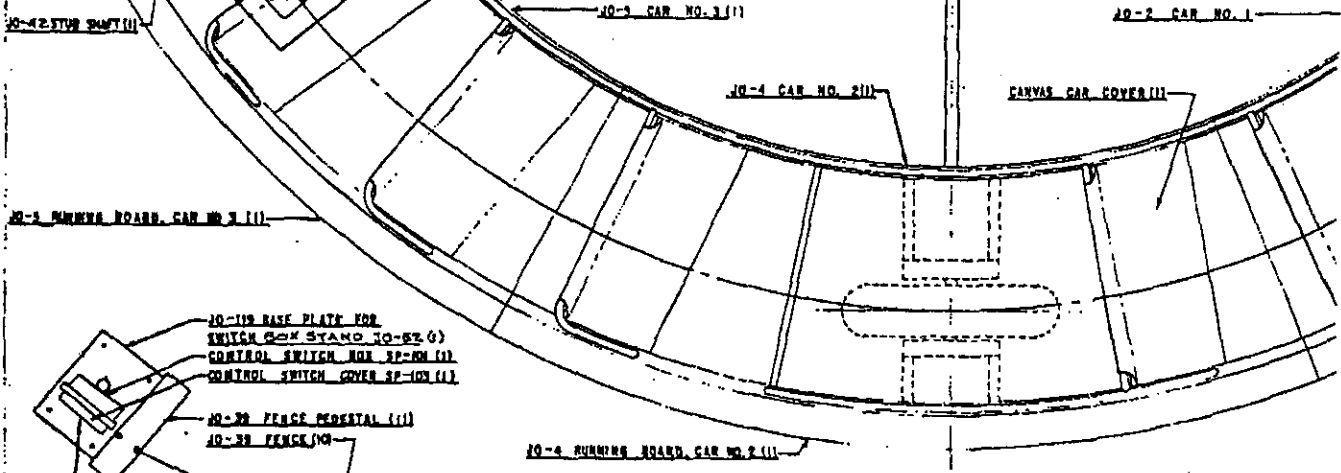
MAINTAIN GREASE BETWEEN HIGH AND LOW LEVEL. USE NO. 600W GREASE IN NORMAL WEATHER, OR MIXTURE OF ONE HALF SAE NO. 40 AND ONE HALF OF NO. 600W IN COLD WEATHER. DRAIN AND RE-FILL AFTER FIRST 100 HOURS OF OPERATION.

CLEAN BREATHER PIPE
 BELT- LINCOLN V-300 1/2" TO 1 1/2" DIA. (1)
 OVERHAUL SHAKY
 MOTOR 3 H.P. 1800 R.P.M. FRAME "ND 3 PH. 1/4" SHAFT DIA. (1)
 MOTOR 3 H.P. 1800 R.P.M. FRAME "2514 (PH. 1/4" SHAFT DIA. (1)

WARRANT NO. 4
 BLINKER EYES
 TRANSFORMER
 COLE HERSEY
 EAGLE FLASH
 LAMP HOLDER
 60 WATT 110

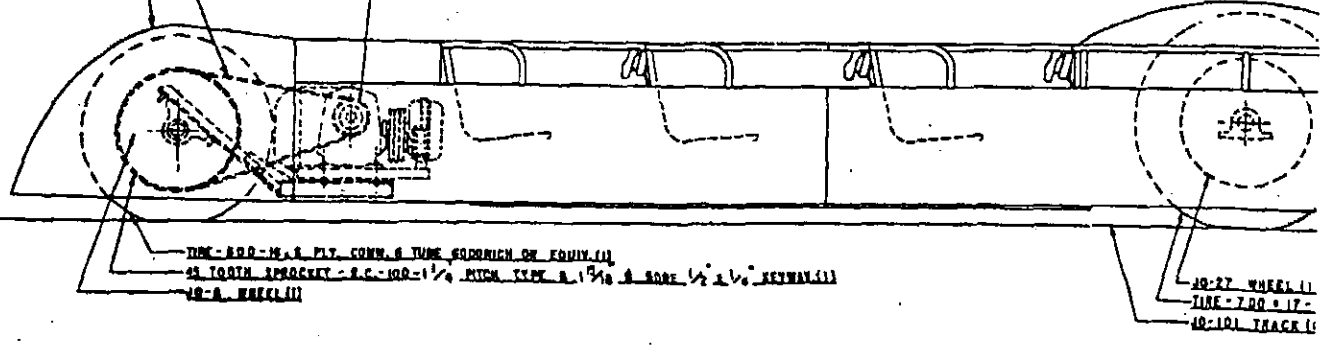
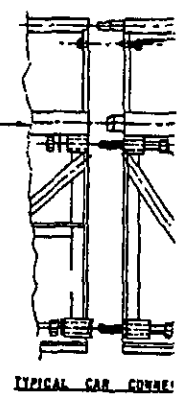
MONN EDWARDS NO 374 110 V. 1/2 HP. (1)
 FLUID DRIVE - TUN DISC. 8.4 H.S.D. 1/2" BORE FOR 1 PH. (FR. 2514)
 1 3/4" BORE FOR 1 PH. (2514) WITH OR-28-8.4 SHEAVE (1)
 BELT - "A" SECTION SUPER MET NO. 8-48 1/4 TO 4.8 P.D. (3)
 SHEAVES 15" CENTER DIST.
 SHEAVE - 3 GROOVE "A" SECTION 4.8 P.D. 7/8" BORE (1)
 3/16" 1/32 RETVAL LATERAL.
 BRAKE - CUTLER HAMNER TYPE 3-A - SOLENOID OPERATED (1)
 MAGNETIC BRAKE 10 LBS. FT. TORQUE 1" BORE 1/2" x 1/2"
 KEYWAY 220-3-60 OR TO SUIT CUSTOMER.

REFER TO KIDDIE RIDE DRIVE INSTRUCTION SHEETS FOR MAINTENANCE INFORMATION.



TRIMMILL 150 SW SWITCH WITH CIRCUIT BREAK FUSES.
 TRIMMILL 231 SWITCH WITH EUSTYON CARD FUSES.
 YZ-2RQ-42 MOMENTARY CONTACT SWITCH.
 HAGEN TIME SWITCH # 73-04260
 AB-CONTACTOR NO. 102-COA-92.

10-3 BITAN SECTION (1)
 CHAIN - R.C. - 100 - 1 1/4" PITCH 7.2 PITCHES 1.6" RIVETED & WITH R
 HALF LINK & PAPER-1000 BUSHING 1-7/8" L.
 12 TOOTH SPURGECK - R.C. - 100 - 1 1/4" PITCH TYPE B. 1 1/4" BORE 1/2" x 1/2"
 1/2" x 1/8" KEYWAY.

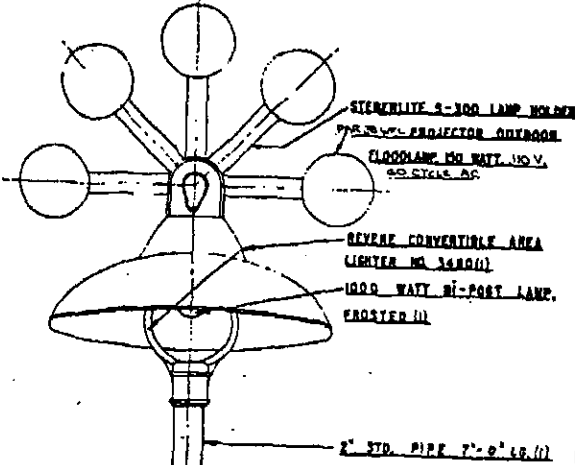


A NEW REDUCER, U-300 10-14-60
 B CN-2827 P.M. 5-5-70

ABRASIVE TRACK PAINT
 MCDUGAL-BUTLER NON SKID GRAY
 10-101 TRACK SECTION (12)

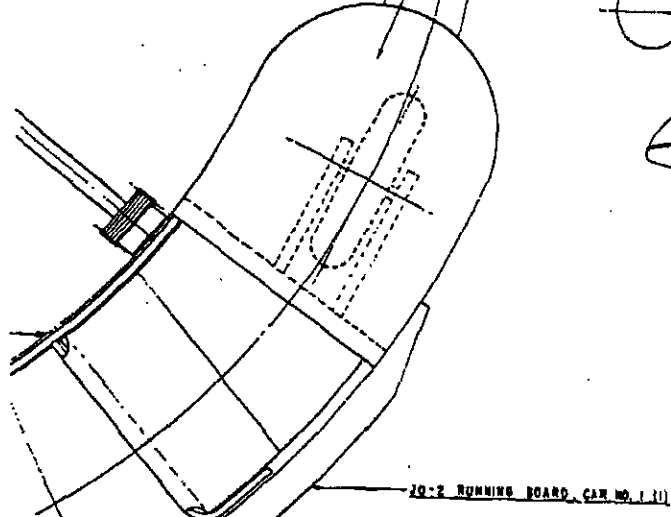
TOGGLE SWITCH AND ROY (1)

YZ (2)
 110 V. 60 CYC. (1)
 SE W. CO. NO. 4822 (1) NO. SARG. BUSS. FUSE (1)
 BUTTON NO. 8472 (1)
 L.S. NO. 58718 (1)
 LAMP BULB (1)



STERNLITE 2-300 LAMP HOLDER
 PRO. 2000-PROJECTOR OUTDOOR
 FLOODLAMP 100 WATT 110 V.
 60 STGLE. AC
 SEVRE CONVERTIBLE AREA
 LIGHTER NO. 3480 (1)
 1000 WATT HI-POST LAMP
 PROSTER (1)

2" STD. PIPE 7'-0" LG. (1)

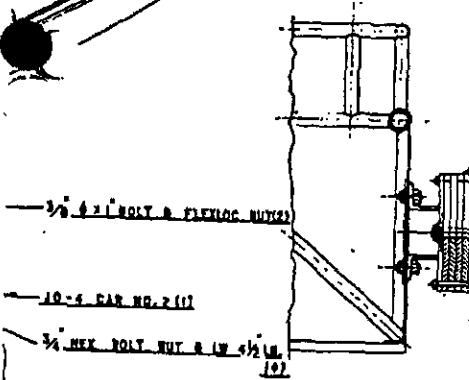


10-2 RUNNING BOARD, CAR NO. 1 (1)

10-175 CATERPILLAR SIGN (1)



10-121 LIGHT SUPPORT (1)
 TYPE N-2-3 COLLECTOR RING (1)
 THE B.A. WESCHE ELEC. CO.
 CINCINNATI 10, OHIO
 1-3008-3 WHITE THRUST BEARING (1)
 2.00" ID. 3" OD. 1/2" THICK.
 10-95-3 BEARING (1)
 1-3200 OILITE THRUST BEARING (1)
 2 1/4" OD. X 2 1/2" ID. X 1/2" THICK.
 10-34 RADIUS ARM PIVOT (1)



3/8" 4" BOLT & FLEXLOC NUT (2)

10-4 CAR NO. 2 (1)

3/4" HEX BOLT NUT & LW 2" LG. (1)

10-35 TIE BRACKET (1)

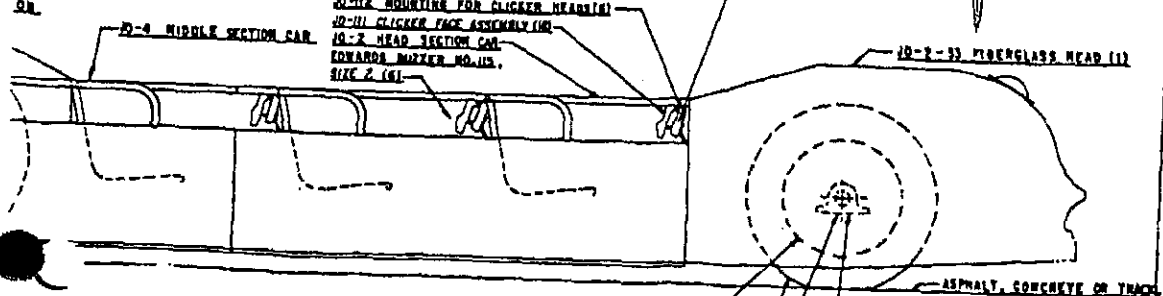
10-31 CENTER POST (1)

3/4" HEX BOLT NUT & LW 2" LG. (1)

10-38 STAKE (1)

YZ-280-42 MICROSWITCH (1)
 10-112 MOUNTING FOR CLICKER BEARING (1)
 10-111 CLICKER FACE ASSEMBLY (1)
 10-2 HEAD SECTION CAR
 EDWARDS METER NO. 415,
 SIZE 2 (1)

10-2-33 FIBERGLASS HEAD (1)



ASPHALT, CONCRETE OR TRACK

10-111

WHEN ORDERING PARTS
 SPECIFY YOUR PURCHASED RIDE SERIAL NUMBER,
 PART NUMBER DESIRED, AND QUANTITY DESIRED.
 SPEED OF RIDE IS 7 1/4 B.P.M.

10-28 WHEEL (1)
 TIRE - 6.00 x 16 - 9 PLY (1)
 GREASE EACH BEARING 4 TIMES
 PLYWOOD BLOCK LINED P-231
 1 1/2" W. TRACK & 1/2" FOR 3 WHEELS.

ALLAN HENSCHELL CO., INC.
 AMUSEMENT DEVICES, 25 TOWNSHIP, N.Y.
 JOLLY CATERPILLAR
 PART NUMBERS AND
 ILLUMINATION INSTRUCTIONS.
 10-11-60 1970 7-11-60 1960
 10-11-60 1970 7-11-60 1960
 10-11-60 1970 7-11-60 1960