



NUMBER: B090R1056-0

DATE: Feb. 9, 1990

SUPERSEDES:

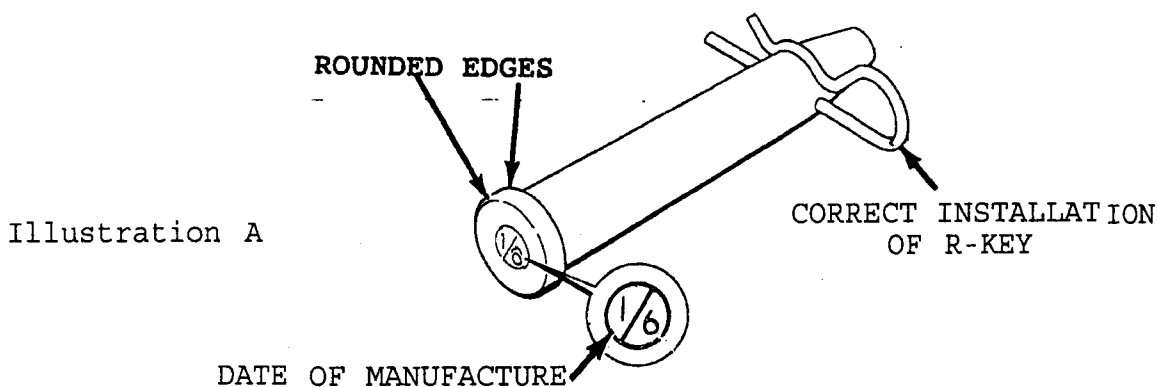
SERVICE BULLETIN

Effective Serial Number: All Units

Ride: All Rides

Subject: General Safety - Taper Pins

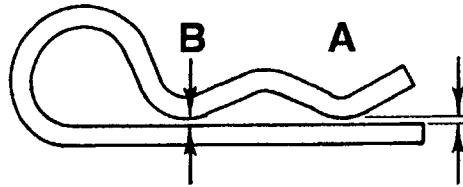
It has come to the attention of Chance Rides, Inc. that the taper pins being used with amusement rides are subject to deterioration due to improper use and wear. Chance Rides, Inc. specifies certain pins for certain applications on amusement rides. These pins have been developed over a period of years, taking into account size, design, material and hardness characteristics. Only pins specified by Chance Rides, Inc. may be used on rides manufactured by Chance Rides, Inc. These pins are identified as shown in Illustration A.



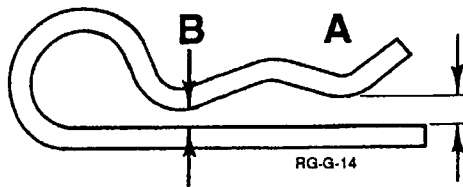
Care should be taken when installing and removing taper pins. Since these pins are hardened (as are hammers and punches) care must be taken to strike the pin straight on. Striking a pin at an angle could cause the pin to chip resulting in bodily injury. For this reason APPROVED SAFETY GLASSES OR GOGGLES MUST BE WORN AT ALL TIMES when taper pins are being installed or removed. Any taper pin which is chipped, bent, or mushroomed on either end must be discarded and replaced with a new pin.

All keepers (R-keys, hair pins, lynch pins, etc.) must be inspected for wear. If a keeper is bent out of shape or "sprung", as shown in Illustration B, it must be replaced.

Illustration B



Acceptable hair pins
Dimension "A" equals dimension "B" in a relaxed position



Unacceptable hair pins
Dimension "A" is greater than dimension "B" in a relaxed position

NEVER ATTEMPT TO BEND A HAIR PIN BACK INTO SHAPE.
REPLACE IT WITH A NEW PART.

CHANCE RIDES, INC. recognizes and recommends the safety procedures specified in ASTM Standards F770 Operation Procedures for Amusement Rides and Devices and F853 Maintenance Procedures for Amusement Rides and Devices.

All work must be performed by qualified personnel, capable of understanding the function of the parts and their proper installation.

NOTICE

USE ONLY THOSE COMPONENTS AUTHORIZED, SPECIFIED OR PROVIDED BY THE MANUFACTURER. IF ANY ALTERATIONS AND/OR MODIFICATIONS ARE MADE TO THE ORIGINAL DESIGN WITHOUT THE MANUFACTURER'S EXPLICIT WRITTEN CONSENT OR WITHOUT DIRECT SUPERVISION BY A MANUFACTURER'S REPRESENTATIVE. CHANCE RIDES MAKES NO CLAIM AS TO THE INTEGRITY OF THE ALTERED OR MODIFIED RIDE.