



NUMBER: B406R1149-0

DATE: APR. 4, 1994

SUPERSEDES:

---

---

## SERVICE BULLETIN

---

---

Effective Serial Number: 406-00193 through 406-01093

Ride: CENTURY WHEEL

Subject: Gondola Carrier Rework

Chance Rides, Inc. has become aware from field experience, that the gondola carrier on the above noted amusement rides can develop cracks in the crossmembers on which the gondola stacks sit and that the carrier wheel axles can break free from the carrier. Both of these items require rework as outlined in this bulletin.

Chance Rides, Inc. requires all owner/operators of the above noted CENTURY WHEEL rides to order and install kit number K406R1149-0. This kit is available at no charge if ordered within 90 days of the date of this bulletin. Use the instructions in this bulletin to install the kit. All work must be completed and the Certification Of Compliance returned to Chance Rides, Inc. within fifteen (15) days of the receipt of the kit.

All work must be performed by qualified personnel, capable of understanding the function of the parts and their proper installation.

### NOTICE

Use only those components authorized, specified or provided by Chance Rides, Inc.

Chance Rides, Inc. SPECIFICALLY DISCLAIMS ANY LIABILITY for losses associated with any unauthorized alterations and/or modifications or additions and installations of unauthorized components.

Kit K406R1149-0 Parts List

<u>Item No.</u>	<u>Part Number</u>	<u>Description</u>	<u>Quantity</u>
1	30221700	Angle 1-3/4 x 1-3/4 x 1/4	5
2	35191500	Axle Pin	8

NOTE: To install this kit, as outlined in this bulletin the gondolas must be unloaded from the carrier and the carrier completely removed from the trailer frame.

Installation Instructions for Kit K406R1149-0

1. Inspect front and rear sides of the carrier crossmembers for cracks. If any are present, contact Chance Rides, Inc. Customer Service Department for repair procedures.
2. Position and weld angles as shown in Illustration A.
3. Angles should be added at 5 locations, front and back of first two crossmembers and front only of third crossmber.

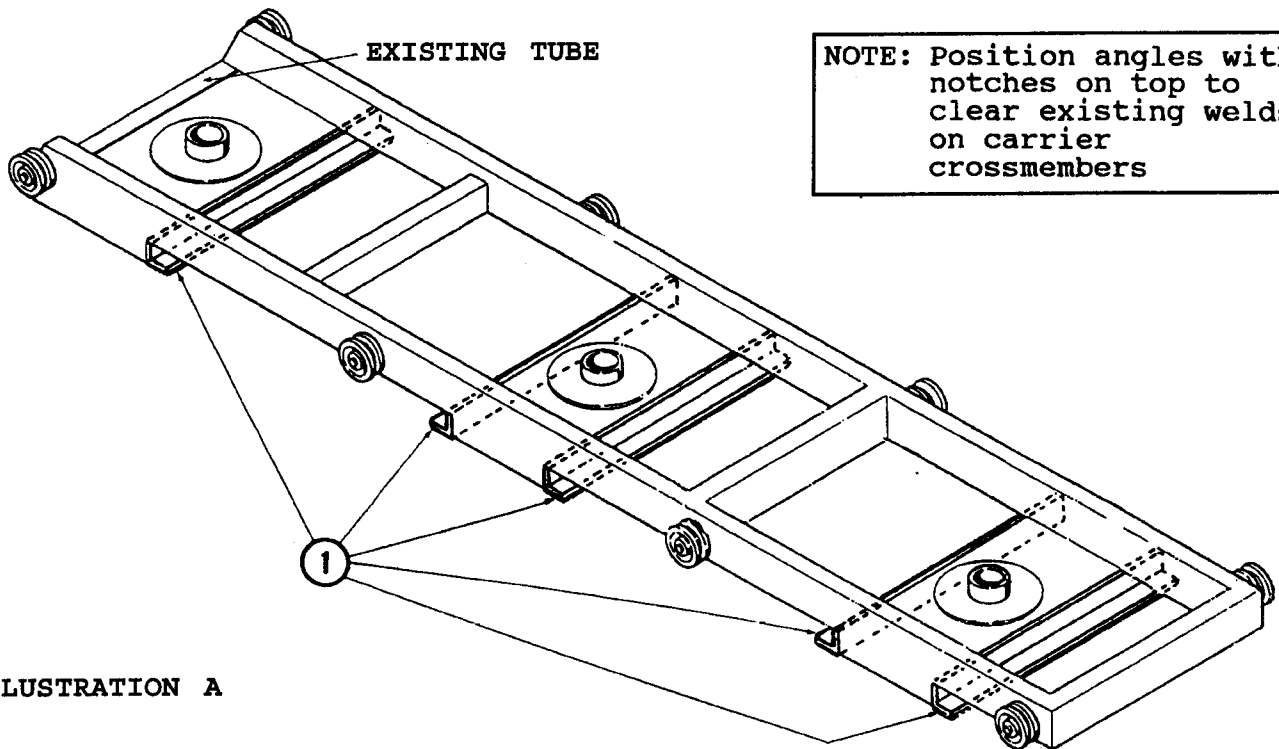
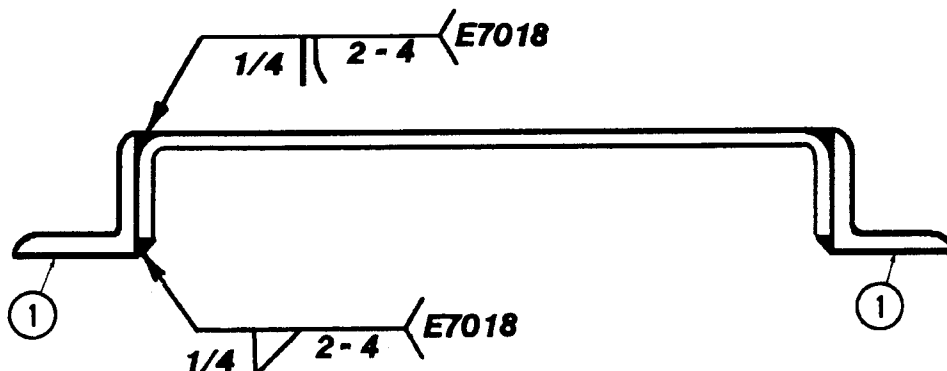


ILLUSTRATION A



4. Grind off existing welds, remove and discard axles, eight (8) places.
5. Install new axles as shown in Illustration B.
6. Weld axle end to carrier using E7018 welding rod.
7. Repeat until all eight (8) axles have been welded in place.

ILLUSTRATION B

