



CHANCE RIDES, INC.
4219 Irving
Wichita, KS 67277-2328
U.S.A.
Phone: 1-800-242-6231 • FAX: 1-316-942-7416
Website: www.rides.com
E-mail: rides@rides.com

Bulletin No:	B406R1197-A
Release Date:	September 21, 1999
Effective Date:	September 21, 1999
Supersedes:	B406R1197-0
Completion Date:	December 21, 1999
Page:	1 of 3

SERVICE BULLETIN

Ride Manufacturer: CHANCE RIDES, INC.

Affected Production Dates: All

Ride Name: CENTURY WHEEL

Affected Serial Nos.: All Units

Model No.: 406

Abstract of Issue:
INSPECTION OF LONG SPREADER BARS

Reason For Release:

Chance Rides, Inc. has become aware that cracks can develop in the long spreader bars which support the drive rims on CENTURY WHEEL amusement rides. A kit has been developed to reinforce the long spreader bars in those areas.

Action to be Taken:

Chance Rides, Inc. requires all owner/operators to visually inspect and rework all long spreader bars as outlined in this bulletin.

If indications are found in any spreader bar, contact the Chance Customer Service Department.

If no indications are found, order and install the Spreader Bar Rework Kit, number K406R1197-0. This kit includes all necessary parts to rework one complete ride, with complete instructions for installation. **DO NOT INSTALL THIS KIT IF ANY SPREADER BAR IS CRACKED OR OTHERWISE DAMAGED.**

The kit will be offered at a reduced price if ordered within 90 days of the release date of this bulletin.



CHANCE RIDES, INC.
4219 Irving
Wichita, KS 67277-2328
U.S.A.
Phone: 1-800-242-6231 • FAX: 1-316-942-7416
Website: www.rides.com
E-mail: rides@rides.com

Bulletin No:	B406R1197-A
Release Date:	September 21, 1999
Effective Date:	September 21, 1999
Supersedes:	B406R1197-0
Completion Date:	December 21, 1999
Page:	2 of 3

Ride Manufacturer: CHANCE RIDES, INC. Affected Production Dates: All

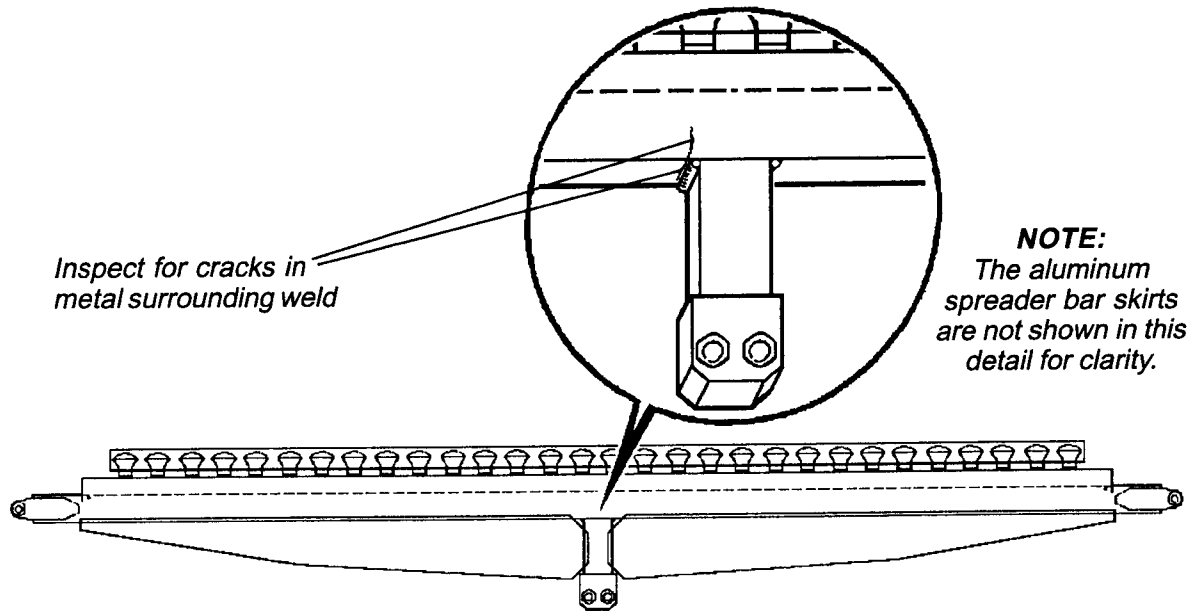
Ride Name: CENTURY WHEEL Affected Serial Nos.: All Units

Model No.: 406

Detail of Issue (continued):

INSPECTION PROCEDURE

Inspect the weld and the surrounding metal in the area shown in the following illustration. Inspect both sides of the long spreader bar. This inspection must be performed on ALL long spreader bars.



If any indications are found, contact the Chance Customer Service Department.



CHANCE RIDES, INC.
 4219 Irving
 Wichita, KS 67277-2328
 U.S.A.
 Phone: 1-800-242-6231 • FAX: 1-316-942-7416
 Website: www.rides.com
 E-mail: rides@rides.com

Bulletin No: B406R1197-A
 Release Date: September 21, 1999
 Effective Date: September 21, 1999
 Supersedes: B406R1197-0
 Completion Date: December 21, 1999
 Page: 3 of 3

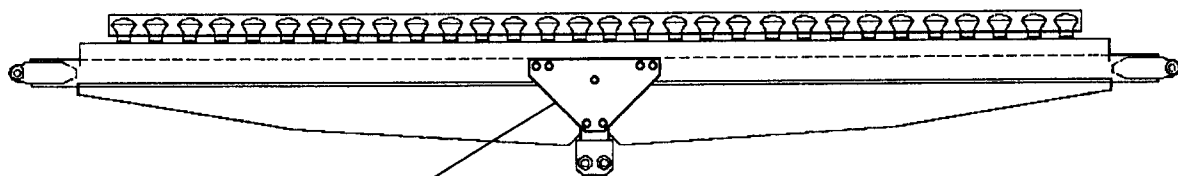
Ride Manufacturer: CHANCE RIDES, INC. Affected Production Dates: All

Ride Name: CENTURY WHEEL Affected Serial Nos.: All Units

Model No.: 406

Detail of Issue (continued):
 After all spreader bars have been inspected, install the Spreader Bar Rework Kit, number K406R1197-0 using the instructions provided with the kit. The kit includes the following parts:

<u>Part Number</u>	<u>Description</u>	<u>Quantity</u>
406-257-001	GUSSET - SPREADER BAR	60
60743700	HEX HEAD CAPSCREW (5/16-24 x 2-5/8)	210
64750600	NUT - HEX (5/16-24 FULL)	210
K406R1197-0	INSTALLATION INSTRUCTIONS (drawing)	1



*Gusset
 (2 places each spreader bar)*

All work must be performed by qualified personnel, capable of understanding the function of the parts and their proper installation.

NOTICE

Use only those components authorized, specified or provided by Chance Rides, Inc.

Chance Rides, Inc. SPECIFICALLY DISCLAIMS ANY LIABILITY for losses associated with any unauthorized alterations and/or modifications or additions and installations of unauthorized components.