



CHANCE RIDES MANUFACTURING, INC.
4200 Walker
Wichita, KS 67277-2328
U.S.A.
Phone: 1-316-942-7411 • FAX: 1-316-942-2012
Website: www.rides.com
E-mail: rides@rides.com

Bulletin No: B408CRM125-A
 Release Date: March 4, 2004
 Effective Date: Immediately
 Supersedes: B408CRM125-0
 Completion Date: N / A
 Page: 1 of 5

SERVICE BULLETIN

Ride Manufacturer: CHANCE RIDES, INC. Affected Production Dates: All

Ride Name: CHAOS (Portable Model Only) Affected Serial Nos.: All Units

Model No.: 408

Abstract of Issue:
 Floor Replacement

Reason For Release:

Service bulletin B408CRM125-0 is superseded by this bulletin and is no longer in effect.

Due to cost and availability, Chance Rides Manufacturing, Inc. is no longer able to supply replacement composite floor sections for the above noted CHAOS amusement rides. Replacement floors can be fabricated from locally procured materials, using the specifications provided in this bulletin. These floors require additional supports to be installed, as specified in this bulletin.

Action to be Taken:

In the event that one or more floor sections require replacement, use materials meeting these specifications:

- Flooring - 1" thick plywood, smooth on one side for the top surface. Marine grade plywood is preferred for durability, but not required. **DO NOT USE 3/4" THICK PLYWOOD.** To ensure a proper fit, use the floor section being replaced as a template.
- Coating - Durabak™ Non-Slip Coating (manufactured by The Durabak Company, Aurora, CO.), applied per the manufacturer's instructions. A minimum of two coats is required on all sides to seal the plywood against moisture.
- Supports - Additional floor support components are specified on the following pages of this bulletin. The supports are required under any plywood floor section. They can also be used under the original composite floor sections to provide extended life, at the owner's option.

Chance Rides Manufacturing, Inc. issues notifications for the benefit of owners of amusement rides manufactured by Chance Rides Manufacturing, Inc. As a service to the industry, and in the interest of employee and public safety, Chance Rides Manufacturing, Inc. also issues notifications for the benefit of owners of amusement ride equipment for which the manufacturer no longer exists, such as the Allan Herschell Company, Chance Manufacturing Co., Inc., Chance Rides, Inc., etc. In doing so, Chance Rides Manufacturing, Inc. does not assume liability for losses associated with amusement ride equipment built by manufacturers other than Chance Rides Manufacturing, Inc.



CHANCE RIDES MANUFACTURING, INC.
4200 Walker
Wichita, KS 67277-2328
U.S.A.
Phone: 1-316-942-7411 • FAX: 1-316-942-2012
Website: www.rides.com
E-mail: rides@rides.com

Bulletin No: B408CRM125-A
 Release Date: March 4, 2004
 Effective Date: Immediately
 Supersedes: B408CRM125-0
 Completion Date: N / A
 Page: 4 of 5

Ride Manufacturer: CHANCE RIDES, INC. Affected Production Dates: All

Ride Name: CHAOS (Portable Model Only) Affected Serial Nos.: All Units

Model No.: 408

Detail of Issue (continued):

CHAOS Floor Support Installation (for use with plywood replacement floors)

Floor Location (refer to drawing)	Support Components Required For Each Section	Location of Floor Support Brackets (Distance from each end of spreader bar or existing floor frame rail. Measurements are plus/minus 1/4")
A (12 places)	408-829-013 T-Support - 70-1/4" long (2 required) 408-829-011 Floor Support Bracket (4 required) 66166200 Monobolt - 3/16" x 7/16" (16 required)	26-3/8" from each end of long spreader bar 13-3/8" from each end of short spreader bar
B (4 places)	408-829-013 T-Support - 70-1/4" long (2 required) 408-829-011 Floor Support Bracket (4 required) 66166200 Monobolt - 3/16" x 7/16" (16 required)	23-7/8" from each end of long spreader bar 2-1/4" from the trailer end of short spreader bar 11" from the outer end of short spreader bar
C (2 places)	408-829-014 Support - 27-1/4" long (1 required) 408-829-011 Floor Support Bracket (1 required) 408-829-012 Floor Support Bracket (1 required) 66166200 Monobolt - 3/16" x 7/16" (8 required)	41-3/8" from the outer end of the long spreader bar Centered on the floor frame rail
D (4 places)	408-829-015 T-Support - 39-3/4" long (2 required) 408-829-012 Floor Support Bracket (4 required) 66166200 Monobolt - 3/16" x 7/16" (16 required)	21-7/8" from each end of floor frame rail (centered)
E (2 places)	408-829-016 T-Support - 34-1/4" long (2 required) 408-829-012 Floor Support Bracket (4 required) 66166200 Monobolt - 3/16" x 7/16" (16 required)	21-7/8" from each end of floor frame rail
F (2 places)	408-829-017 Support - 40" long (2 required) 408-829-011 Floor Support Bracket (2 required) 408-829-012 Floor Support Bracket (2 required) 66166200 Monobolt - 3/16" x 7/16" (16 required)	21-3/4" from each end of floor frame rail
G (1 place)	408-829-017 Support - 40-5/16" long (2 required) 408-829-011 Floor Support Bracket (2 required) 408-829-012 Floor Support Bracket (2 required) 66166200 Monobolt - 3/16" x 7/16" (16 required)	28" from each end of floor frame rail
H (1 place)	408-829-016 T-Support - 34-1/4" long (2 required) 408-829-012 Floor Support Bracket (4 required) 66166200 Monobolt - 3/16" x 7/16" (16 required)	28" from each end of floor frame rail



CHANCE RIDES MANUFACTURING, INC.
4200 Walker
Wichita, KS 67277-2328
U.S.A.
Phone: 1-316-942-7411 • FAX: 1-316-942-2012
Website: www.rides.com
E-mail: rides@rides.com

Bulletin No:	B408CRM125-A
Release Date:	March 4, 2004
Effective Date:	Immediately
Supersedes:	B408CRM125-0
Completion Date:	N / A
Page:	3 of 5

Ride Manufacturer: CHANCE RIDES, INC.

Affected Production Dates: All

Ride Name: CHAOS (Portable Model Only)

Affected Serial Nos.: All Units

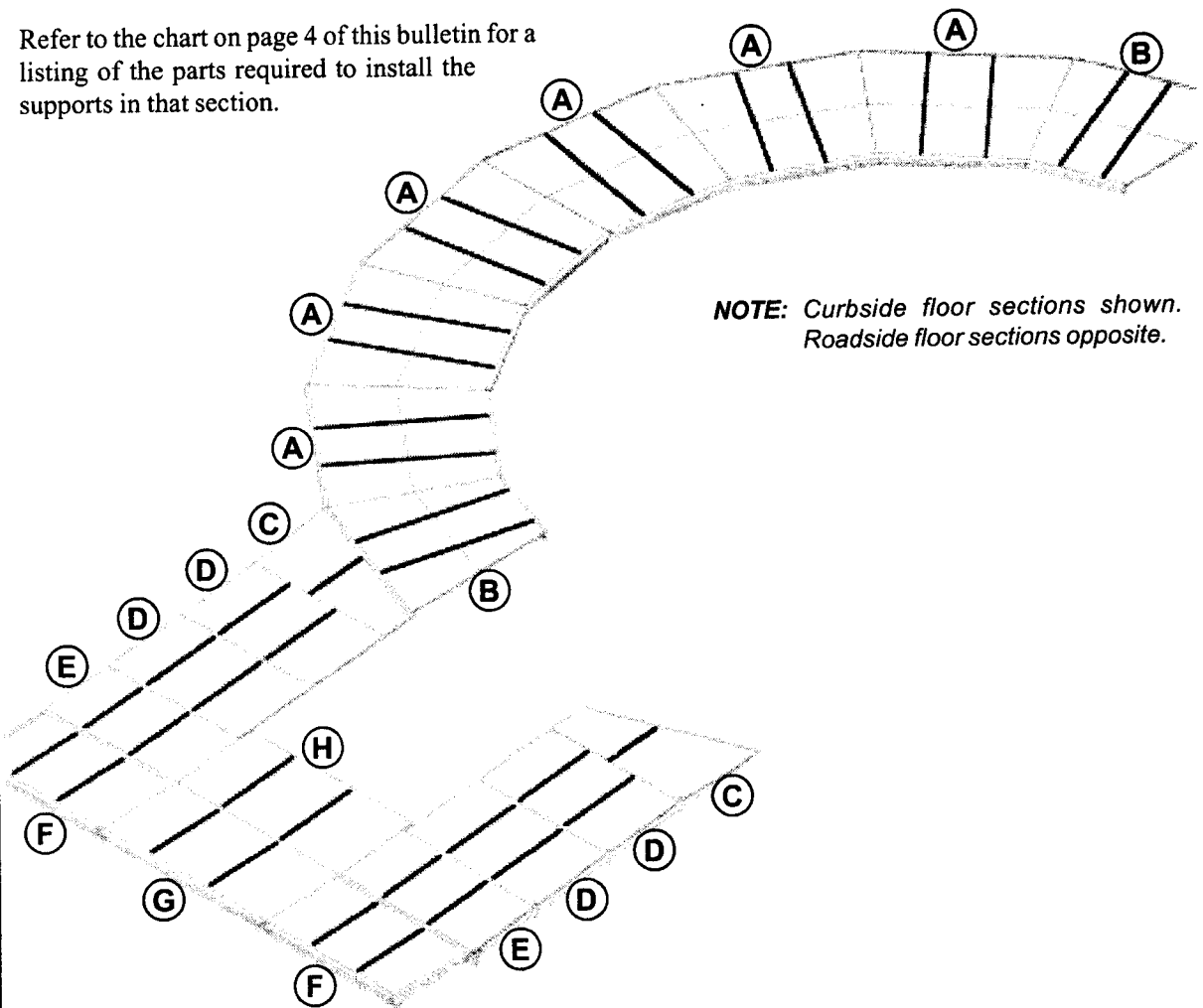
Model No.: 408

Detail of Issue (continued):

Floor Section Identification

Determine the location of each floor section being replaced using the illustration below. Additional floor supports are indicated by heavy lines.

Refer to the chart on page 4 of this bulletin for a listing of the parts required to install the supports in that section.



NOTE: Curbside floor sections shown.
Roadside floor sections opposite.



CHANCE RIDES MANUFACTURING, INC.

4200 Walker
Wichita, KS 67277-2328
U.S.A.

Phone: 1-316-942-7411 • FAX: 1-316-942-2012

Website: www.rides.com

E-mail: rides@rides.com

Bulletin No: B408CRM125-A

Release Date: March 4, 2004

Effective Date: Immediately

Supersedes: B408CRM125-0

Completion Date: N / A

Page: 2 of 5

Ride Manufacturer: CHANCE RIDES, INC. Affected Production Dates: All

Ride Name: CHAOS (Portable Model Only) Affected Serial Nos.: All Units

Model No.: 408

Detail of Issue

Installation Instructions

1. Refer to the illustration on the following page to determine the specific location for each floor section being replaced.
2. Using the chart on page 4 of this bulletin, order the proper quantities for those specific floor sections. Pay attention to the following:
 - The T-supports are different lengths for each floor section. Be sure to order the correct length.
 - The support brackets must be located 1/4" below the surface on which the floors will rest, with the bottom flush with the bottom of the spreader bar or existing floor frame rail. To facilitate installation in this position, there are two different support brackets. Be sure to order the correct part.
3. Locate the support brackets as shown in the detail on page 5. Observe the distance from the support bracket to the end of the spreader bar or existing floor frame rail, as specified in the chart. Clamp the support brackets in place.
4. Using a 7/32" diameter bit, drill the spreader bar or floor frame rail to match the four holes in the support brackets. Secure the brackets with four 3/16" x 7/16" Monobolts.

NOTE: The support brackets can be welded in place if desired. All welding must be performed by a certified welder. Clean areas to be welded with a clean stainless steel brush. Use ER5356 welding electrode and weld along both sides of each bracket.

5. Install the T-supports in the slot of the support bracket slot and install the floors sections.

All work must be performed by qualified personnel, capable of understanding the function of the parts and their proper installation. Use only those components authorized, specified or provided by Chance Rides Manufacturing, Inc. All applicable OSHA safety standards and safe industry practices must be observed.

Observe all safety information contained in the manufacturer's manuals. Make available this bulletin and all related technical information to personnel using the equipment.



CHANCE RIDES MANUFACTURING, INC.
4200 Walker
Wichita, KS 67277-2328
U.S.A.
Phone: 1-316-942-7411 • FAX: 1-316-942-2012
Website: www.rides.com
E-mail: rides@rides.com

Bulletin No:	B408CRM125-A
Release Date:	March 4, 2004
Effective Date:	Immediately
Supersedes:	B408CRM125-0
Completion Date:	N / A
Page:	5 of 5

Ride Manufacturer: CHANCE RIDES, INC.

Affected Production Dates: All

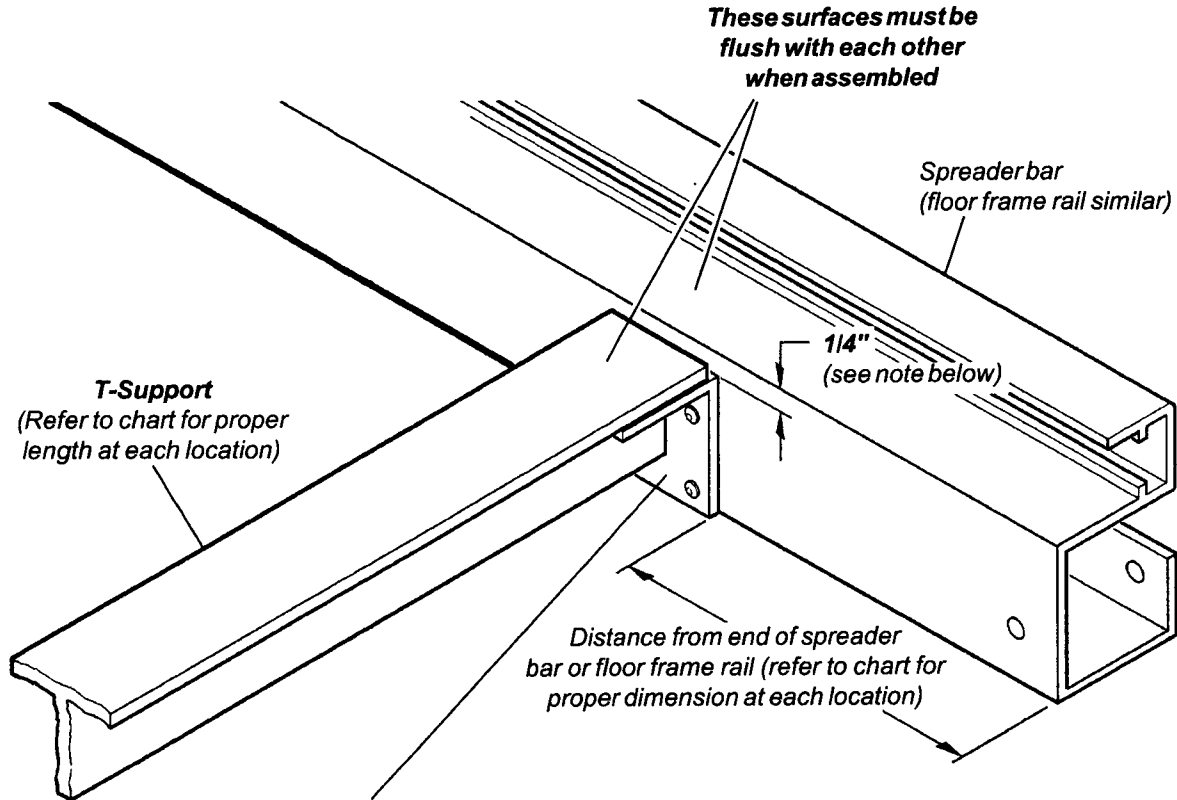
Ride Name: CHAOS (Portable Model Only)

Affected Serial Nos.: All Units

Model No.: 408

Detail of Issue (continued):

Detail of Floor Support Installation



Support Bracket
(Refer to chart for proper bracket at each location)
Match drill 7/32" diameter and secure each support bracket
with four 3/16" x 7/16" Monobolts

NOTE: Locate support brackets 1/4" below the surface on which the floor will rest. The bottom of the support bracket will be flush with the bottom of the spreader bar or floor frame rail