



ALLAN HERSCHELL

CHANCE
MANUFACTURING CO., INC.

102

Number:

5-29-75

Date:

Superceeds:

Number:

Date:

Service Information

YO YO

Rear Erection Cylinder Mount

Ride:

Subject:

URGENT

Recently we have become aware of a condition on the YO YO Ride that could cause a serious accident. The problem is in the area of the tower erection cylinder mount, shown on the back of this sheet. If your ride personnel reverse the direction of the tower lift cylinder with the tower stiff leg brace pinned in position, it may tear the rear erection cylinder mount off the trailer frame. This will allow the tower to fall when the pin is removed, which would have catastrophic results.

It is imperative that you check the rear erection cylinder mount immediately to see that it has not been broken or cracked. Also, you must alert your ride personnel as to this condition so they will not reverse the direction of the erection cylinder until the tower stiff leg pin has been removed.

In order to eliminate the possibility of this condition occurring, we are making a change in the hydraulic circuit that operates the tower erection cylinder. Please contact Richard G. Chance at the factory so we can schedule a service representative to make this change on your ride. This change will be made at no cost to you, and it is very important that you contact us immediately.

Factory and General Office, 4219 Irving, Box 2397 Wichita, Kansas 67201

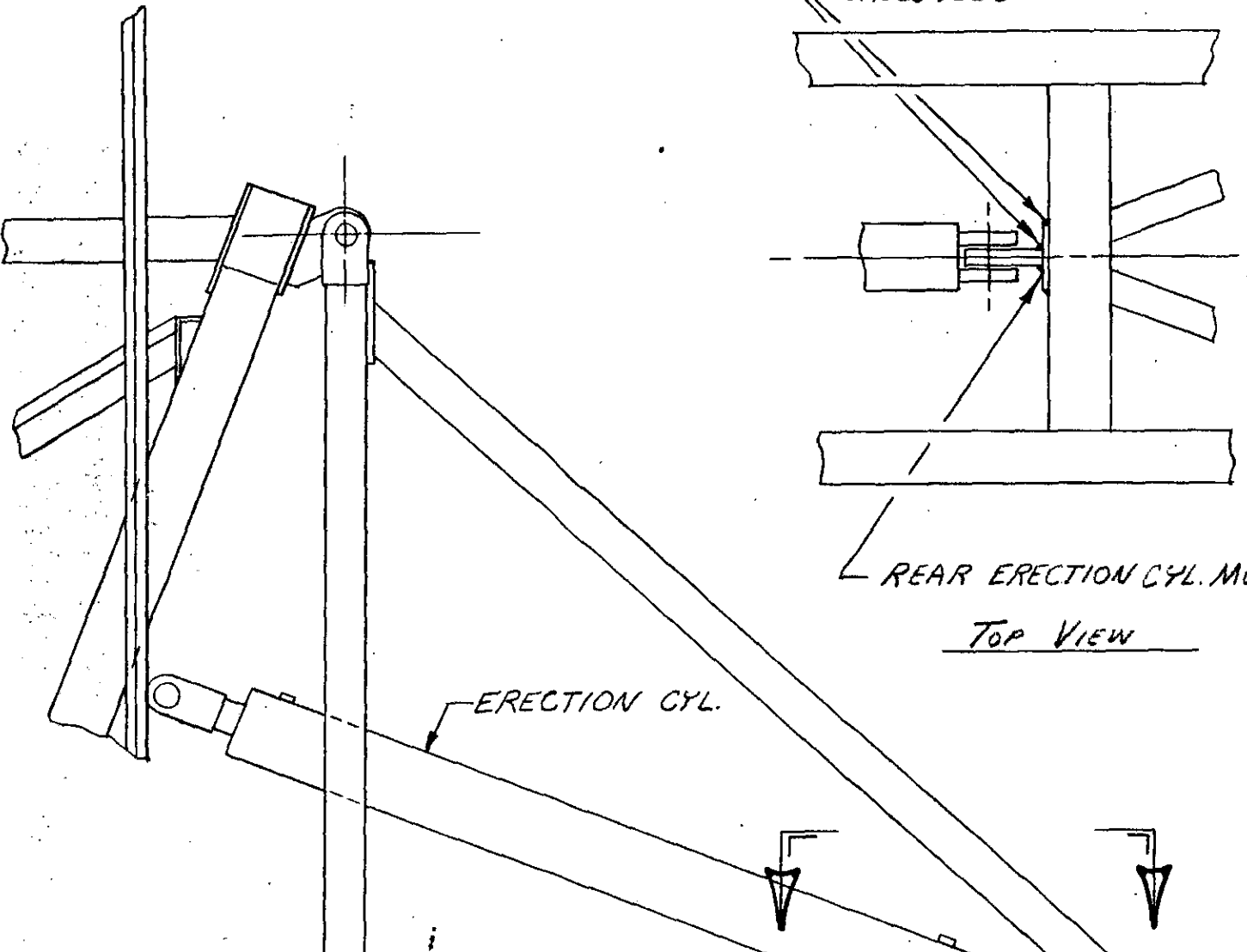
Area Code (316) 942-7411

Sales Office:

103 Ross Ave., Dallas, Texas 75202

Area Code (214) 742-3802

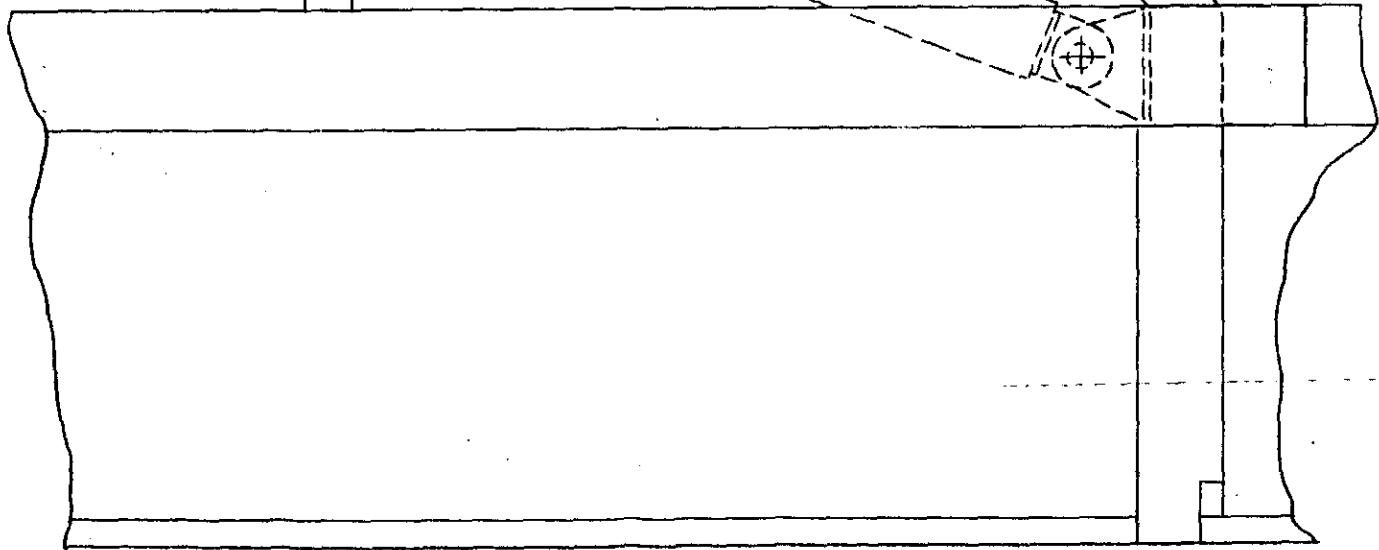
CHECK ALL WELDS AROUND
EAR & DOUBLER PLATE FOR
CRACKS & BULGING OF 6"x10"
CROSS TUBE



REAR ERECTION CYL. MOUNT

TOP VIEW

ERECTION CYL.



SIDE VIEW TRAILER