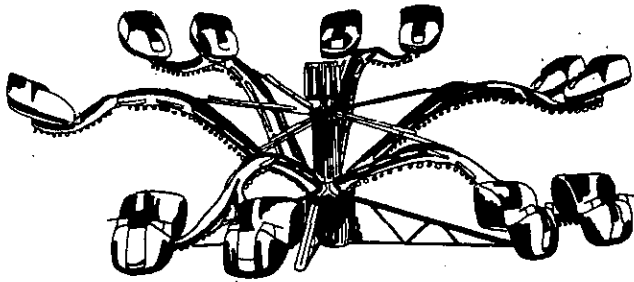


## Spider

<b>Manuf.</b>	<b>Bulletin</b>	<b>Date</b>	<b>Section Found In</b>	<b>Description</b>
Eyerly	Drg No 0-25	7/7/1969	Octopus	Lower bearing assembly
Eyerly	Drg No.0-19/69	8/25/1969	Octopus	Failures in flexoble control cables
Eyerly	Drg No 0-30	4/30/1973	Octopus	Column retaining bar installation
Eyerly	Drg No Bulletin 0-20	8/19/1974	Octopus	Mono ball Support rod bolt bulletin
Eyerly	Drg No 0-38-76	1/30/1976	Octopus	Contact alignment bulletin
Eyerly	Drg. No. 0-41-76	5/4/1976	Octopus	Safety cable Pin (0-626) Transporting bulletin
Eyerly	CPSC	8/16/1994	Monster	Failure of cars tubing
Eyerly	CPSC	9/13/1994	Monster	Failure of cars tubing
Eyerly	Drg No 0-48-86		Octopus	Sweep support rod bulletin
Eyerly	Drg No 0-50-86		Octopus	Eccentric crank bulletin
Eyerly	Bulletin 0-12		Octopus	Instructions for installing the split hub bushing
Eyerly	0-48-88 drawing		Octopus	Sweep drawing and inspection
Eyerly	0436		Octopus	Eccentric Crank



# Spider

(6 arm, 12 car, portable model)



P.O. BOX 12155  
2050 TURNER RD. S.E.  
SALEM, OREGON 97309

TOLL FREE OUTSIDE OREGON  
(800) 547-9156  
(503) 399-7706 FOR AFTER  
HOURS AND WEEKENDS

## Price List

Complete 6-arm, 12 car operating unit with fiberglass cars, fluorescent and incandescent lighting, illuminated center ornament, 3Ø, 208 volt, 15 HP electric driving power equipped with hydro sheave, lighting and power controls at remote operators stand, flexible mechanical clutch/brake linkage, fence\*, car covers, erection and maintenance tools, operation manual and parts book, and selected spare parts.

\$77,598.00

The above, racked on a custom built 33'6" trailer including air brakes, 12 volt lighting to DOT specifications, premium grade tires, and 117 volt electric ½ ton hoist suspended from a 117 volt electric hydraulic telescoping boom (including excise tax).

\$108,750.00

### OPTIONAL EQUIPMENT

All incandescent lighting ..... no extra charge  
Gas power ..... †  
Service wire\*\* ..... †

### STANDARD EQUIPMENT ALLOWANCE

Fence\* ..... †  
Custom built trailer including excise tax .. \$31,152.00

\*Fence 42" high consists of 30-89" long sections, 2-54¼" short sections and 35 jacks.

\*\*See specifications sheet and specify required length.

†Quotation upon application.

**Warranty:** The Warranties of the Manufacturer are limited and are fully set out in each sales agreement.

### ELECTRICAL AND WIRING SPECIFICATIONS:

Conformance to State and local electrical codes is the responsibility of the purchaser. Each ride is delivered to factory specifications unless ordered with deletions and/or extra cost additions and modifications.

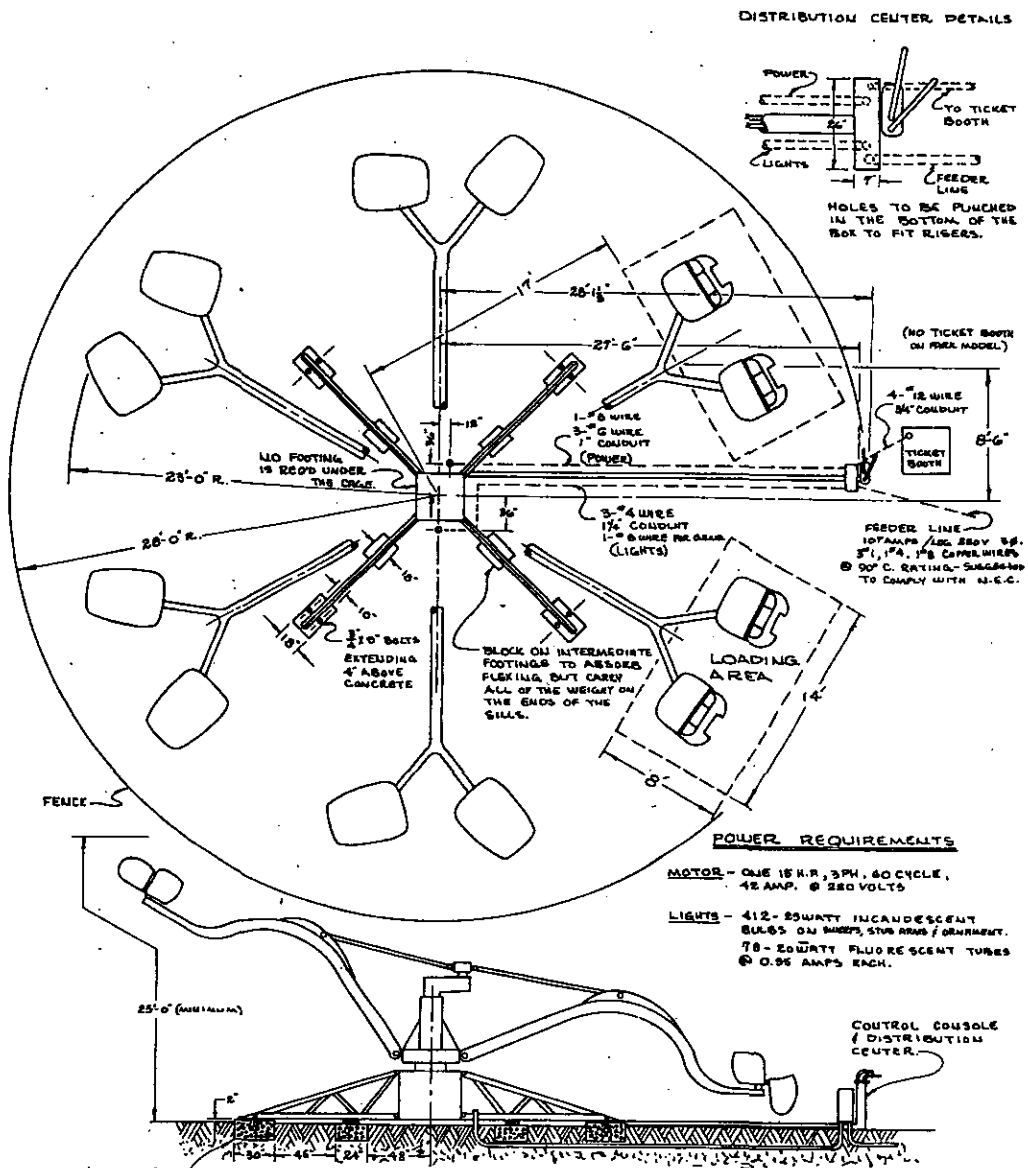
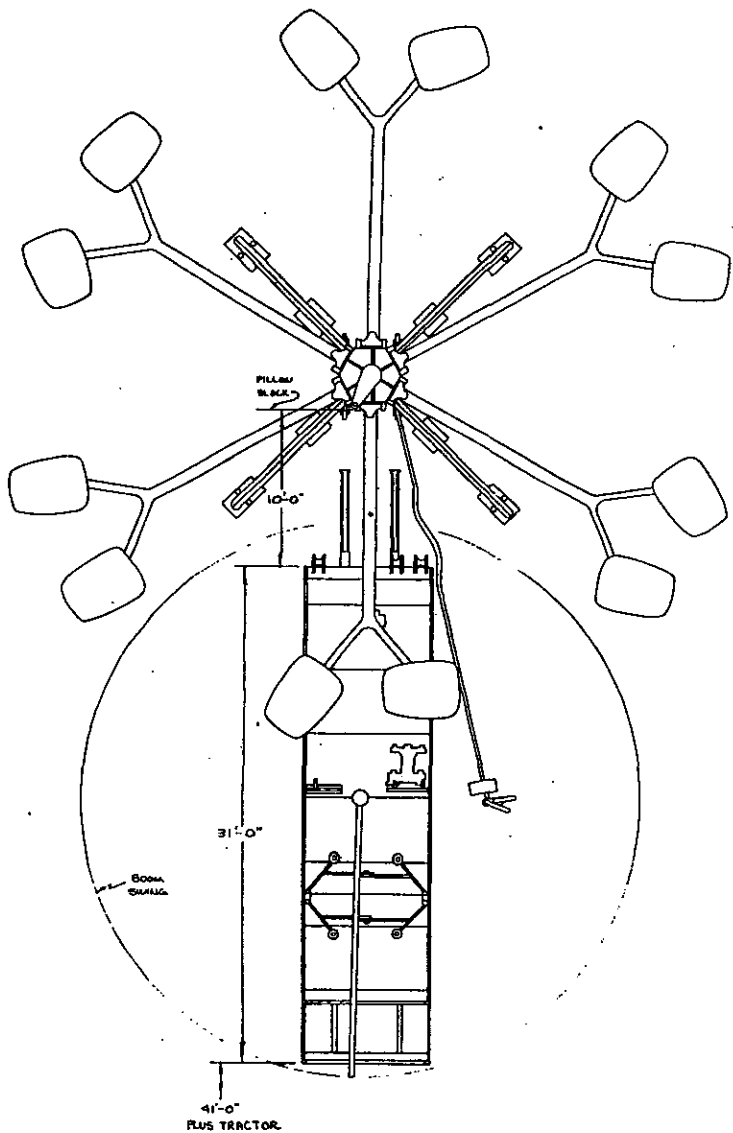
Prices and specifications listed are for United States models delivered within the United States, Canada or Mexico. Eyerly Aircraft Company, hereinafter called company, is represented by distributors and agents in most overseas countries who provide sales assistance, warranty and repair services. Export models and specifications may be different from domestic versions. The company's North America warranty is null and void on any unit purchased for United States delivery and then exported within the warranty period. Export model warranties are administered by our agents and distributors within many more overseas countries and by the company for export sales in those countries wherein we have not appointed distributors and agents.

Specifications subject to change without notice.

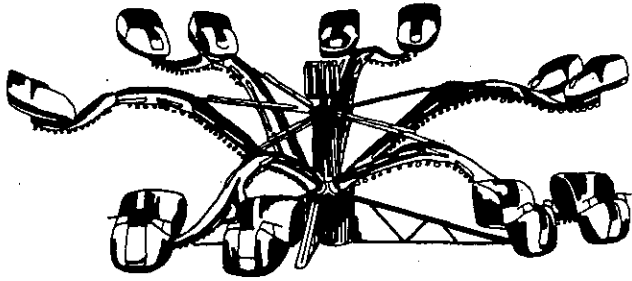
Prices subject to change without notice.

Prices F.O.B. Factory, Salem, Oregon. U.S.A.

Prices effective October 1, 1980



# Price List



## Spider

(6 arm, 12 car park model)



P.O. BOX 12155  
2050 TURNER RD. S.E.  
SALEM, OREGON 97309

TOLL FREE OUTSIDE OREGON  
(800) 547-9156  
(503) 399-7706 FOR AFTER  
HOURS AND WEEKENDS

Complete 6-arm, 12-car operating unit with fiberglass cars, fluorescent and incandescent lighting, illuminated center ornament, 3Ø, 208 volt, 15 HP electric driving power with hydro sheave, lighting and power controls at remote operator stand with conduited wiring between operator's stand and center cage, rigid mechanical clutch/brake linkage, car covers, erection and maintenance tools, operation manual and parts book, selected spare parts.

\$75,250.00

### OPTIONAL EQUIPMENT

All incandescent lighting ..... no extra charge

Fence\* ..... †

\*Fence 42" high consists of 30-89" long sections, 2-54¾" short sections and 35 jacks.

†Quotation upon application.

**Warranty:** The Warranties of the Manufacturer are limited and are fully set out in each sales agreement.

### ELECTRICAL AND WIRING SPECIFICATIONS:

Conformance to State and local electrical codes is the responsibility of the purchaser. Each ride is delivered to factory specifications unless ordered with deletions and/or extra cost additions and modifications.

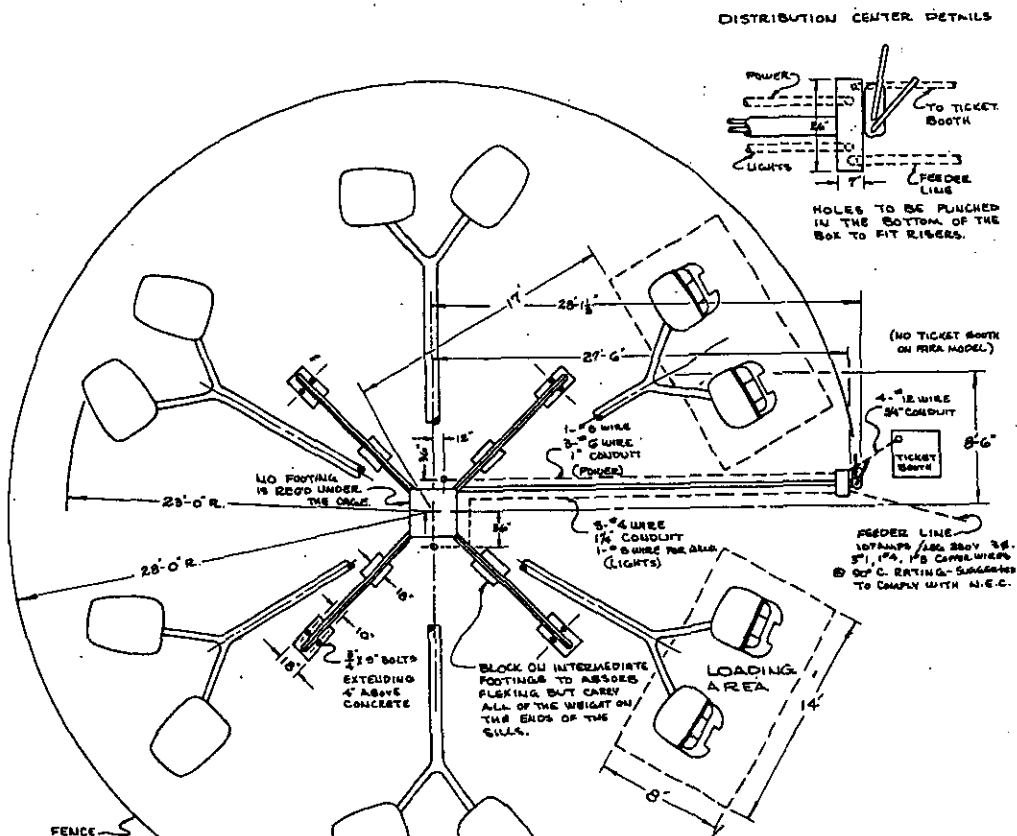
Prices and specifications listed are for United States models delivered within the United States, Canada or Mexico. Eyerly Aircraft Company, hereinafter called company, is represented by distributors and agents in most overseas countries who provide sales assistance, warranty and repair services. Export models and specifications may be different from domestic versions. The company's North America warranty is null and void on any unit purchased for United States delivery and then exported within the warranty period. Export model warranties are administered by our agents and distributors within many more overseas countries and by the company for export sales in those countries wherein we have not appointed distributors and agents.

Specifications subject to change without notice.

Prices subject to change without notice.

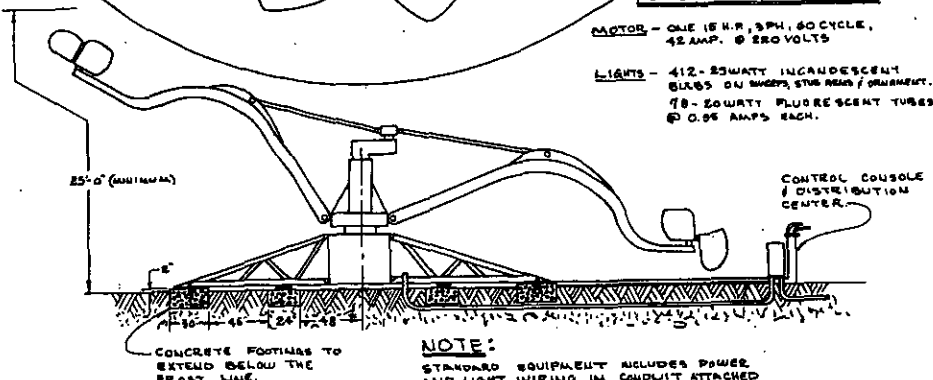
Prices F.O.B. Factory, Salem, Oregon. U.S.A.

Prices effective October 1, 1980



**POWER REQUIREMENTS**

- MOTOR - ONE (5 H.P., 3 PH., 60 CYCLE, 42 AMP. @ 220 VOLTS)
- LIGHTS - 412 - 25 WATT INCANDESCENT BULBS ON WINGS, 576 WATT / 60 WATT @ 0.05 AMP. EACH.
- 78 - 20 WATT FLUORESCENT TUBES @ 0.05 AMP. EACH.

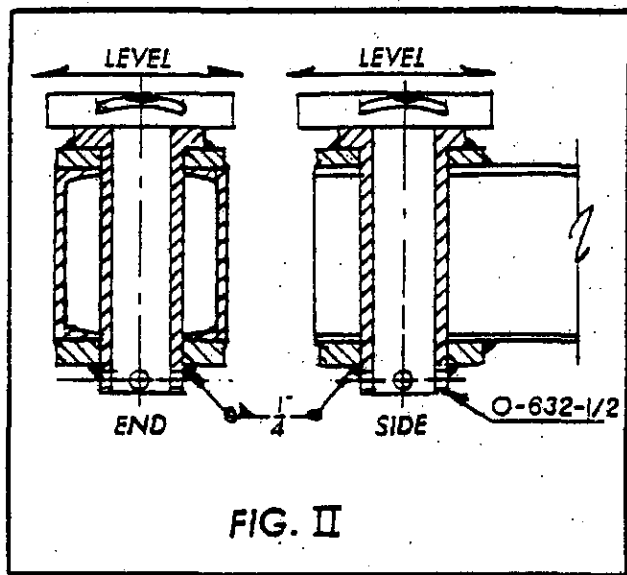
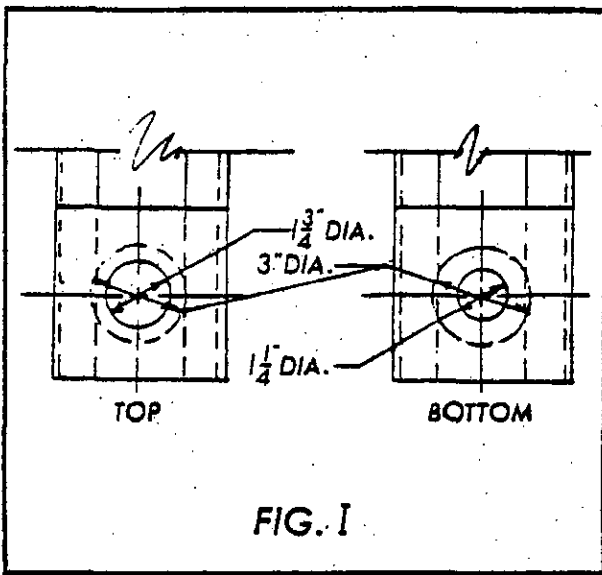


**NOTE:**  
STANDARD EQUIPMENT INCLUDES POWER AND LIGHT WIRING IN CONDUIT ATTACHED TO THE CONTROL TUBE FROM DISTRIBUTION CENTER TO CAGE. ALTERNATE UNDERGROUND INSTALLATION IS SHOWN ABOVE.

MUD SILL FOOTINGS MUST BE DESIGNED TO WITHSTAND A MAXIMUM LIVE LOAD OF 7465 LBS.



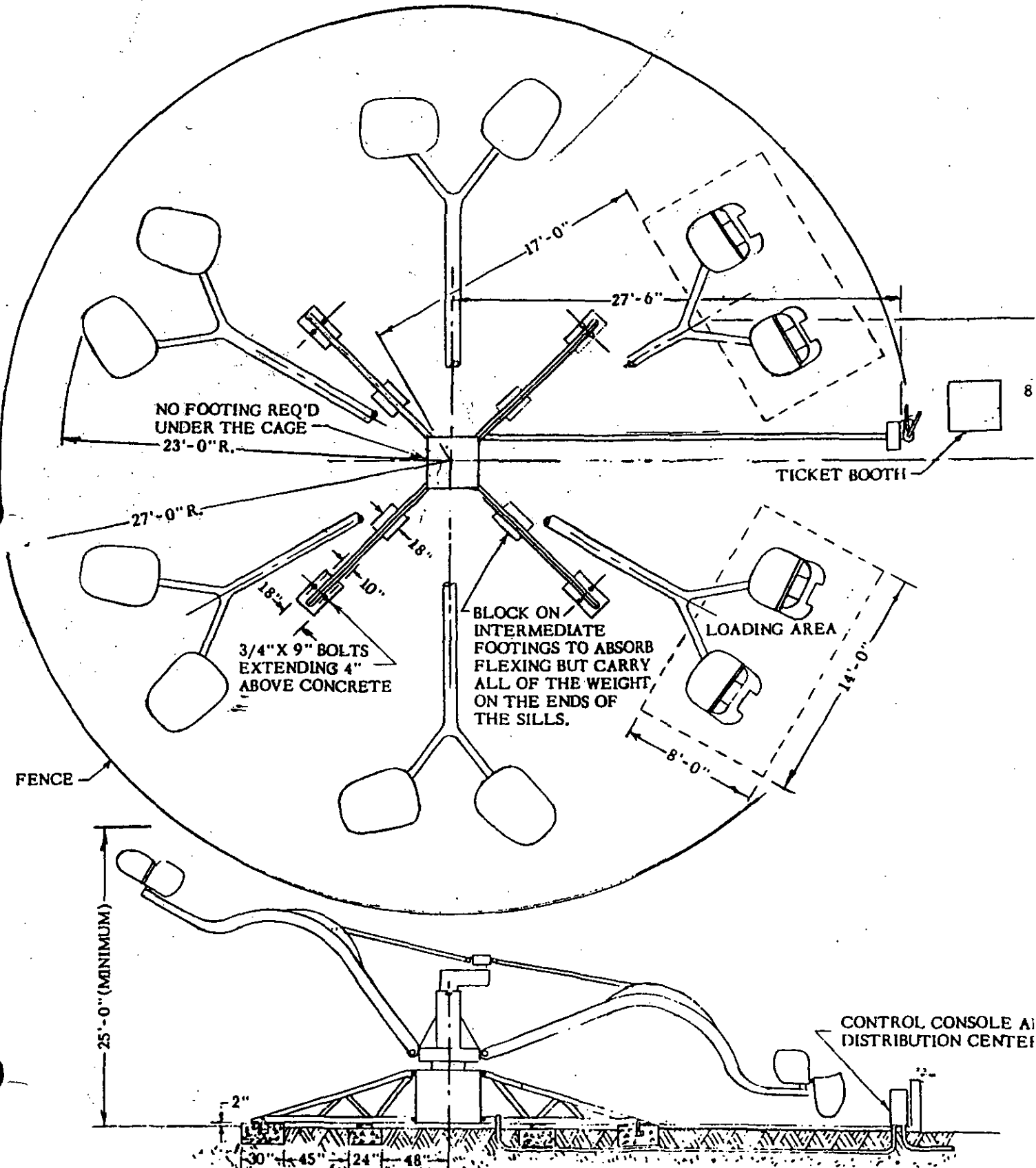
# INSTRUCTIONS FOR FIELD CONVERSION TO O-631 CAR SPINDLES



Referring to Fig. 1 above use the reversible marking disc furnished with kit assembly to mark (scribe) 3" diameter circle on each of present upper and lower plates forming present car spindle retention area. The disc has pilots on each side to center in the corresponding size holes top and bottom. Burn out 3" holes top and bottom as marked. Remove all burning slag. Insert the O-632-1/2 Car Support Tube with one set of drilled holes parallel and the other at right angles to the arm per Fig. 11 with the arm level. Level the Support Tube in two directions as shown in Fig. 11. Using ASTM 6013 or equivalent electrodes tack weld the tube at the top in four (4) places on opposite sides. Re-check level and correct if tilted then tack weld the tube at bottom in four (4) places as at the top. Weld the tube permanently with a 1/4" fillet weld all

around top and bottom. The tubes are bored .006" over-size before shipment. The anticipated welding shrinkage should reduce this to .004" over-size allowing a slip fit for the spindle. Excessive shrinkage spots can be corrected by filing with a half round file to remove high spots. To prevent rust and corrosion in bore of tube O-632-1/2 coat with heavy grease where frequent removal is occasioned. We recommend a more permanent lubricant such as NEVER SEEZ along with occasional rotation of spindle to alternate set of lock pin holes for permanent or park operation. Lock Pin O-634 is recommended for portable operation and class 5 or better 3/8" X 3-3/4" heat treated bolt with self locking nut recommended for permanent operation.

# SPIDER BASE PLAN



CONCRETE FOOTINGS TO  
EXTEND BELOW THE  
FROST LINE