

06/12/03 16:10 FAX 39 0386 802099

MOSER RIDES SRL

FANTASY ISLAND 003



OSTIGLIA, U FANTASY ISLAND AMUSEMENT PARK  
 320 West 7th Street  
 NS, RIF BEACH HAVEN, NJ 08008  
 USA  
 VS, RIF

SERVICE BULLETIN

Re: FAMILY TOWER 15 MT.

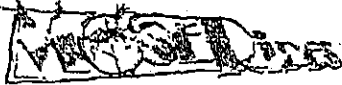
THE WIRE ROPES SHALL BE REPLACED AFTER 400,000 RISE MOVEMENTS AS RECORDED BY THE RISE RELAY IMPULSE COUNTER OR EARLIER IF THEY ARE DAMAGED.

YOURS SINCERELY

**MOSER RIDES S.R.L.**

*Heleo Moser*  
 Technical Dept.

Ostiglia, 12/06/03



**MOSER RIDES S.R.L.**  
Via A. Brennero, 15B - 46035  
OSTIGLIA (MN) ITALY -  
Phone #39 0386 800001 -  
Fax #39 0386 802099

Bulletin N.01-02-03-04  
Release Date 02-March-04  
Effective Date 02-11-04

## SERVICE BULLETIN

Ride Manufacturer: Moser Rides srl	Affected Production Dates:
Ride Name: Family Tower 15x20	Affected Serial No.: ZA9SPB0302H3PF063
Model Number: 15 Mt 20 - 063	

### REASON FOR RELEASE:

- 1) Restraint System Change - The construction of the passenger vehicle is such that the operator can not readily check the back row passengers to make sure that the secondary seat belt is properly latched. The change to the restraint locking mechanism permits over the shoulder restraints to be released in the event of evacuation of the ride, either, all at once, if the ride is in the loading position, or individually, if the passenger vehicle is off the ground.
- 2) Maintenance Recommendations for Shock Absorbers - A Maintenance Procedure has been prepared for the shock absorber units on the ride to be sticking when the ride is stored during long periods of inactivity.

### ACTION TO BE TAKEN:

- 1) Restraint system Change - This change is to be performed only by Moser Rides Service Personnel.
- 2) Maintenance Recommendations for Shock Absorbers - The Maintenance Procedure should be added to the Maintenance Manual and performed on the schedule recommended in the detailed procedure.

Date of Issue:  
(Text, Drawings, Schematics)

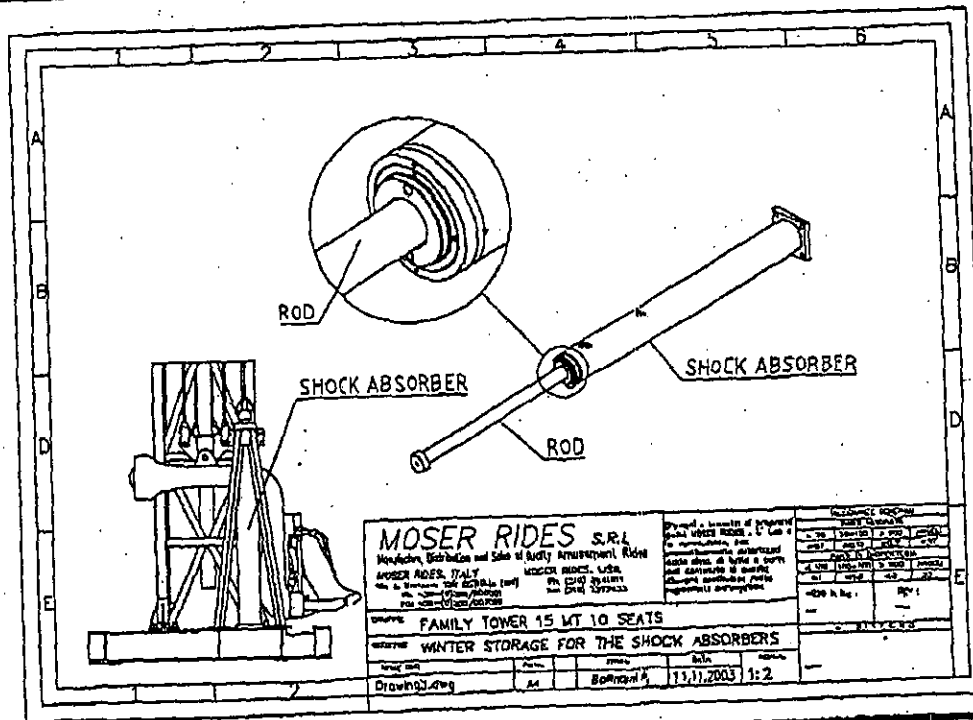
For additional info refer to the pages 1 to 10.

**SHOCK ABSOR-**

**SHOCK ABSORBER CHANGES**

**STORAGE RECOMMENDATIONS FOR BLADDER AND NITROGEN TYPE HD SHOCK ABSORBER UNITS**

- 1) During extended shut down periods, the shock absorber piston rod may be extended or retracted
- 2) If the piston rod is extended, apply a light film of oil in accordance with ( Lubricant Vasoline ) with a clean cloth to avoid corrosion.
- 3) If the piston rod is compressed, a delay in the return of the piston rod may occur. If a delay occurs, push the piston rod into the compressed position several millimeters to insure a proper return.
- 4) Keeping the piston rod in the retracted or compressed position provides for protection against the environment.
- 5) Whether extended or retracted during extended shut down periods, each unit must be visually inspected and pressure tested in accordance with Moser Rides Maintenance instructions.
- 6) The rod wiper seal does not require service.



**MOSER RIDES****MANUFACTURERS AND SELLERS OF QUALITY AMUSEMENT RIDES**

FANTASY ISLAND AMUSEMENT PARK  
320 West 7th Street  
BEACH HAVEN, NJ 08008  
USA

## SERVICE BULLETIN

Re: FAMILY TOWER 15 MT.

THE WIRE ROPES SHALL BE REPLACED AFTER 400,000 RISE MOVEMENTS  
(that corresponds to 40,000 cycles ) AS RECORDED BY THE RISE RELAY  
IMPULSE COUNTER OR EARLIER IF THEY ARE DAMAGED.

YOURS SINCERELY

**MOSER RIDES S.R.L.**



Technical Dept.

Ostiglia, 16/03/06

## PROCEDURA DI EVACUAZIONE - EVACUATION PROCEDURE

## FAMILY TOWER 15 MT 20 SEATS

Evacuation Procedures are provided as follows:

1) Emergency Stop Initiated by the Operator

Correct the situation which initiated the Emergency Stop.  
Thoroughly inspect the ride to make sure everything is in correct working order.  
Reset the Emergency Stop Button (Figure 9) to the normal position.  
Lower the Gondola with the Manual Control.  
When the gondola is the lowest loading position on the deck, instruct the passengers to unlock their safety belts, and use the Air System (Figure 12) to raise the Over the Shoulder Restraints.

2) Power Failure or Blackout

In case of power failure or blackout, and power is immediately restored, or the hydraulic pump has failed, the Manual Lowering Method is used.  
Use this method if power has been restored.  
Make sure that the area is clear under the Gondola.  
Close Valve A (Figure 10) by turning the black knob.  
Using Lever B (Figure 11) manually restart the hydraulic pump.  
When the pump restarts the gondola will descend slowly to the lowest loading position.  
Unload the passengers as in Paragraph 1) above.  
When the passengers have been unloaded, remove Lever B (Figure 11).  
And re-open Valve A (Figure 10)  
If the hydraulic pump will not restart, proceed to Method 3) below.  
If the Over the Shoulder Restraints will not open with the Air Supply, proceed to Method 3) Manual Restraint Release below.

3) Ride Failure with the Vehicle in the up position

Evacuating the passengers with the Gondola in the up position must only be performed by PROPERLY TRAINED AND EQUIPPED EMERGENCY RESCUE PERSONNEL.

Passengers must be evacuated and secured one at a time using rescue ladders.  
Start with the outside passengers and, one at a time, insert the Manual Release Tool (Figure 4) into the back of the headrest, or pull the Manual Release Lever (Figure 5). Move from the outside to the inside when removing passengers, one at a time. The three seats in front of the tower in the second row have the Built in Manual Release Lever (Figure 5). Have the passenger release the Seat Belt, lift the Restraint, and take the passenger to the ground.

**FAMILY TOWER 15 MT 20 SEATS**

DESCRIPTION OF SAFETY RESTRAINT SYSTEM

Each Seating Position of the Passenger Vehicle is provided with a Over the Shoulder Restraint Bar (Figure 1) and locking mechanism (Figure 2). Under normal operating conditions, the restraint is permitted to move freely from the open position to the closed position. The locking ratcheting system prevents the Restraint bar from being opened when the ride is in operation.

During normal operations, all of the restraints are opened at the same time using a supply of air to a pneumatic cylinder in the mechanism. This operation is only permitted when the ride is in fully lowered loading position on the deck.

The safety Belts which attach the Restraint to the Seat must be unlatched before the restraints are opened using the Pneumatic Cylinder and Air Supply.

Evacuation Procedures are provided as follows:

- 1) Emergency Stop Initiated by the Operator
- 2) Power Failure or Blackout
- 3) Ride Failure with the Vehicle in the Up Position.