



Issuing Entity:  
Sellner Manufacturing Co.  
515 Fowler Street  
Faribault, MN 55021  
U.S.A.  
(800) 533-0390  
Fax (507) 334-0503

Bulletin No.: Spin 10  
Release Date: 05/01/98  
Effective Date: 05/01/98  
Supercedes:  
Completion Date: 05/29/98  
Page: 1 of 2

# SERVICE BULLETIN

Ride Manufacturer: Sellner Manufacturing Co.  
Affected Production Dates: All spin rides which have built-in door handles  
Ride Names: All spin rides including: Bear Affair, Berry-go-Round,  
Spin-the-Apple, Barrel of Fun, Pumpkin Patch, Dizzy Dragons  
Affected Serial Nos.: All spin rides which have built-in door handles

## Abstract Of Issue:

The purpose of this service bulletin is to describe how to remove the permanently attached handle on the door to convert it to a keyed system.

## Reason for Release:

The potential exists for passengers to reach over and release the door latching mechanism. If the secondary latch is not secured, the door could open causing passengers to fall out of the ride.

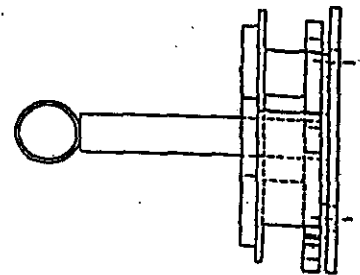
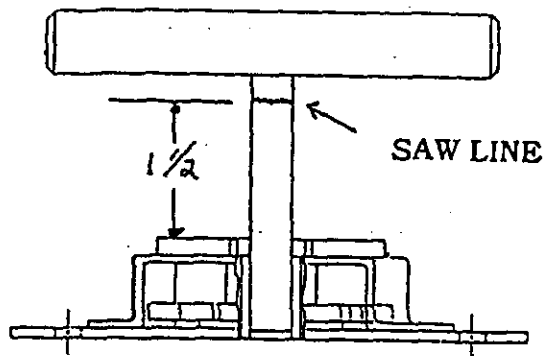
## Action To Be Taken:

1. Remove the fiberglass door skin from the outside of the step unit.
2. Cut off existing door handle at a point 1½ inches beyond the lock turret assembly. (see referenced drawings attached hereto.)
3. De-burr end of square key stock.
4. Replace fiberglass door.
5. Use the new door key handle by placing it over square key stock to open door. Do not leave door key handle in place during ride operation.

## Detail Of Issue:

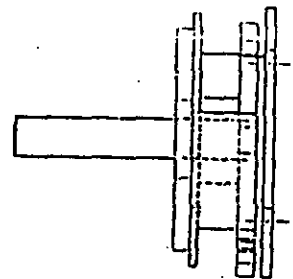
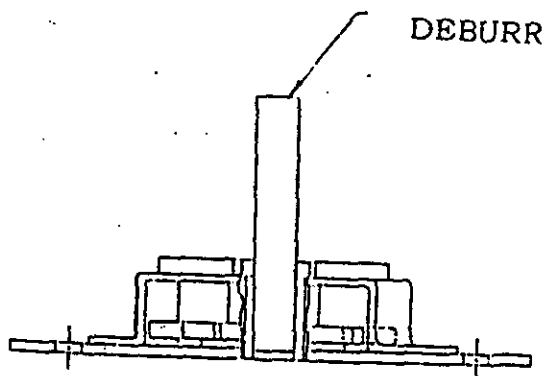
See attached schematics

SELLNER SERVICE BULLETIN SPIN RIDES  
PAGE 2

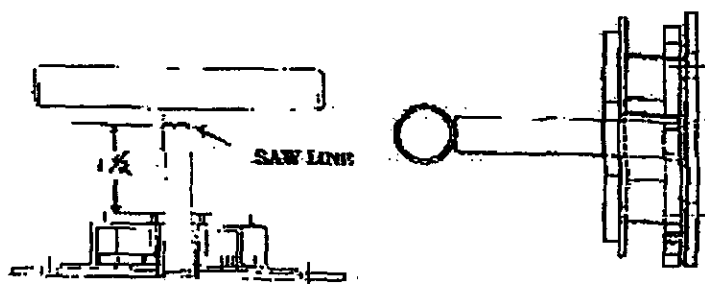


EXISTING MECHANISM.

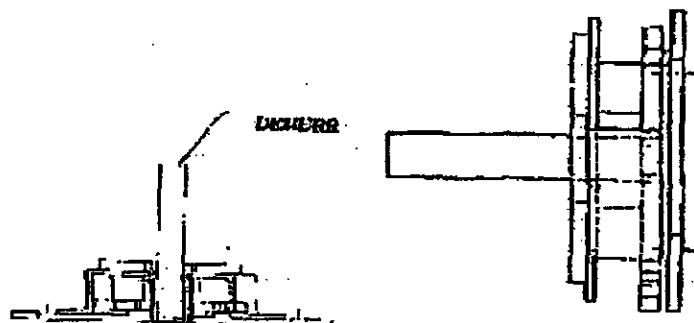
After removing the outer fiberglass door skin, make a saw cut  $1\frac{1}{2}$  inches outboard of the lock turret assembly. Use a hacksaw or the equivalent to saw off door handle.



After the door handle has been removed, use a file to de-burr the edges of the square key stock. This will prevent scratches or scrapes to anyone who contacts the end of the key stock. Use the door key handles supplied by Sellner to open the car doors.



After the door handle has been removed, use a file to de-burr the edges of the square key stock. This will prevent scratches to anyone who contacts the end of the key stock. Use the door key handles supplied by Sellner to open the car doors.



**SELLNER MANUFACTURING COMPANY** June 10, 1996

**TILT-A-WHIRL Maintenance Memo #23 Clarification** - The letter states the position of Sellner in regards to currently available technology and the potential for injury. The company stands behind their statement in Maintenance Memo #23 *"All the equipment listed shall be in operational condition and, is required to be used on the ride to insure the safety of the riding public."* Some jurisdictional agencies have deemed the equipment mandatory in order to allow operation of the ride. Sellner has made the electric braking system available at a deeply discounted price. For a complete copy of the letter contact Sellner at 800-533-0390

January 1996 **SELLNER MFG. CO.** Tilt-A-Whirl-Maintenance Memo #24

**SUBJECT:** Tilt-A-Whirl Car Top Hook replacement guideline. Memo gives specific criteria for replacement for rear mounting hole, front mounting hooks, release hook and mounting loop. For specific information contact Sellner Mfg. Co. 800-533-0390.

January 1996 **SELLNER MFG. CO.** Tilt-A-Whirl Maintenance Memo #25

**SUBJECT-**Cable Drive Tilt-A-Whirl platform hinge replacement guideline. Memo gives replacement criteria for platform hinges and bolts. for additional information contact Sellner Mfg. Co. 800-533-0390

# Sellner

MANUFACTURING COMPANY

*Builders of America's Favorite Family Amusement Rides*

April 22, 2004

To whom it may concern,

As of the date depicted above, Sellner Manufacturing Company authorizes the owners/operators of all Spin Ride models manufactured by Sellner Manufacturing Company to have the option of using the inside traveling fence.

A formal notice will be issued later this Spring/Summer.

Should you have questions or require additional information, please call our Customer Service Department at 507-334-5584 between the hours of 8:00am - 5:00pm Central Time.

Best regards,



Mike LeClair  
Engineering Manager  
Sellner Manufacturing

 SIGN  
FACTORY

515 Fowler Street • Faribault, MN 55021 U.S.A.  
1.888.SELLNER • 507.334.5584 • Fax: 507.334.0503  
E-mail: sellner@whirlin.com • www.whirlin.com

 STITCH &  
SCREEN



**Sellner Manufacturing Company**  
515 Fowler Street  
Faribault, Minnesota 55021  
PH: 507-334-5584  
Fax: 507-334-0503  
Email: sellner@whirlin.com

**Bulletin No.:** SR-010  
**Release Date:** December 1, 2004  
**Effective Date:** December 1, 2004  
**Supercedes:** None  
**Completion Date:** Dec. 1, 2004  
**Page:** 1 of 1

# SERVICE BULLETIN

<b>Ride Manufacturer:</b> Sellner Manufacturing Company	<b>Affected Production Dates:</b> All
<b>Ride Name:</b> Spin the Apple, Barrel of Fun, Berry Go Round, Bear Affair, Dizzy Dragons, Pumpkin Patch, Monkey Mayhem, Martian Madness, Chilly Willy	<b>Affected Serial Nos:</b> All Spin Ride Series (Four-place only)
<b>Model Number:</b> 300800-xx	

**Abstract Of Issue:** Discontinuation of part number 304210 (Fence, SR Alum Guard w/ Decal).

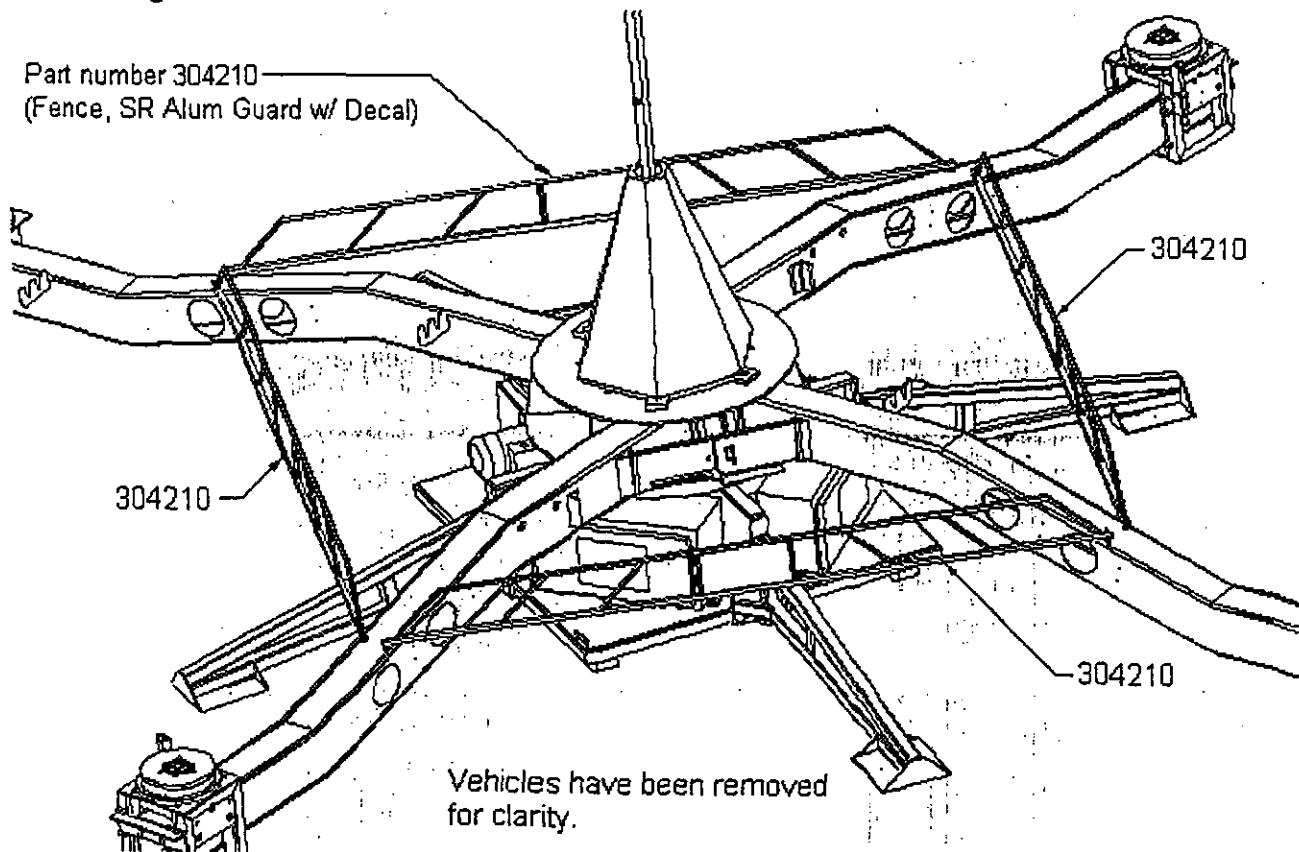
### Reason for Release:

Sellner Manufacturing is discontinuing, and no longer requires the use of, part number 304210 on all four-place Spin Rides. This effect does not alter the operation, structural integrity, or safety of the ride. The fence has been removed from the design for models manufactured after 2003.

### Action To Be Taken

For all four-place Spin Ride models manufactured by Sellner Manufacturing, the owner/operator should discontinue the use of the fence. The owner/operator should inform, and make readily accessible to, all employees who set-up, operate, or tear-down this ride of this bulletin.

### Detail Drawing:





**Sellner Manufacturing Company**  
515 Fowler Street  
Faribault, Minnesota 55021  
PH: 507-334-5584  
Fax: 507-334-0503  
Email: sellner@whirlin.com

**Bulletin No.:** SR-011  
**Release Date:** December 1, 2004  
**Effective Date:** Immediately  
**Supercedes:** None  
**Completion Date:** Dec 1, 2004  
**Page:** 1 of 1

# NOTIFICATION

<b>Ride Manufacturer:</b> Sellner Manufacturing Company	<b>Affected Production Dates:</b> All
<b>Ride Name:</b> Spin the Apple, Barrel of Fun, Berry Go Round, Bear Affair, Dizzy Dragons, Pumpkin Patch, Monkey Mayhem, Martian Madness, Chilly Willy	<b>Affected Serial Nos:</b> All single and four-place Spin Ride Series
<b>Model Number:</b> 300800-xx, 320XXX, 330XXX	

**Abstract Of Issue:** Discontinuation of part number 301041-000 (Cover, 8" Black Spiral Wrap Spring).

**Reason for Release:**

Sellner Manufacturing Company has discontinued, and is no longer requiring, part number 301041-000 on its single and four-place Spin Rides. The part is located around the vehicle door spring, (two per vehicle door). This effect should not alter the operation, structural integrity, or safety of the ride.

**Action To Be Taken**

For all single and four-place Spin Ride models manufactured by Sellner Manufacturing, the owner/operator should discontinue the use of part number 301041-000. The owner/operator should inform, and make readily accessible to, all employees who set-up, operate, or tear-down this ride of this bulletin.

**Detail Drawing:**

