

SAFETY ALERT MESSAGE

Reference : P&S/CPE/0408.1707
ISBN : 11111

Date : 12 August 2004

To : MAINTENANCE DEPARTMENT OF ALL PARKS OPERATING A VEKOMA
MK1200 RELATED TRAIN SYSTEM.
From : VEKOMA RIDES PARTS & SERVICES B.V.

Rides involved:

BOOMERANG
CORKSCREW BAYERN
CUSTOM DESIGNED ROLLER COASTERS MK1200 system
DOUBLE LOOP CORKSCREW
HURRICANE
WHIRLWIND

Subject : Incident.

Recently, an incident occurred with a MK1200 type of train in a park. A main axle of a MK1200 type of train was found broken. This train was delivered in 1997 by Vekoma Manufacturing BV to the park.

Vekoma Rides Parts & Services BV wants to underline the importance of follow up of the maintenance and inspection directives as stated in the owner's manual of the train. These inspection directives ensure that cracks are discovered already in a pre-mature state.

THE INCIDENT

During the ride a strange noise was heard. Inspection immediately after the ride learned that one main axle was broken during or just before start of the ride. No passengers were hurt due to this incident.

See pictures below:



ANALYSIS

The line of the break originated from a crack in the center of the main axle. This crack, due to fatigue and, based on the rust patterns, was already in place for a considerable amount of time. The owner has applied powder paint to preserve the main axle. As a result of this flexible paint cracks could not be discovered in an early stage.

Vekoma Rides Part & Services will carry out further investigations in this matter in collaboration with independent parties. Vekoma Rides Parts & Services will keep all owners and operators of the MK1200 type of train informed on their findings when applicable.

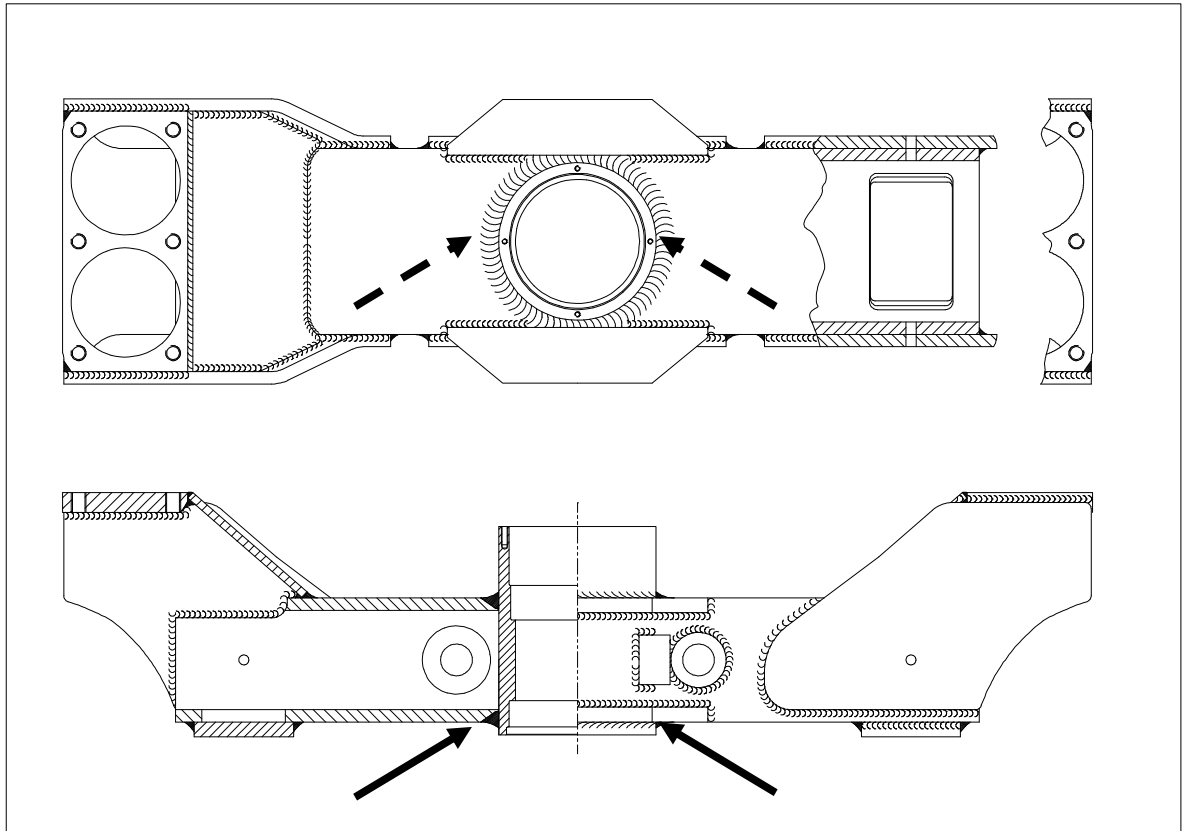
CONCLUSIONS

Based on our knowledge at this moment we would like to advise owners and operators of the MK1200 type of train to carry out regular maintenance and inspections as described in the owner's manual. For your convenience the required actions are clarified below:

- The picture below shows that the weld itself is visual for inspection.



- Carefully weekly visual inspection as described in the manual to all welds on the axles, with special attention to welds as indicated with arrows on the pictures above and on the drawing below.
- Make sure that the actual paint is brittle, so the paint will crack when the surface below cracks.
- Make sure that the surface is clean and preferable painted in a lighter paint. This makes it easier to see indications.
- When there is any doubt, an additional NDT (UT and ET, or MT) inspection will be needed.
- We strongly recommend performing a major NDT (UT and ET, or MT) examination on these parts during the next winter stop.
- If there are any indications, please contact Vekoma Rides Parts & Services.
Tel.: +31 475 409 222



If you need any assistance on the above, please feel free to contact Vekoma Rides Parts & Services.

We would appreciate to receive the results of your inspection.

Kind regards,

Chris Peeters
Manager Vekoma Rides Parts & services b.v.

Tel. : +(31) 475 409 334
Mobile : +(31) 6 1091 6790
E-mail : chris.peeters@vekoma.com
Fax : +(31) 475 403 415