



**WISDOM
INDUSTRIES, Ltd.**

SERVICE BULLETIN

DATE: FEBRUARY 25, 2004
RIDE: ADULT COASTER CARS
SUBJECT: WHEEL BOGGY BRACKETS
COMPLIANCE DATE: IMMEDIATE

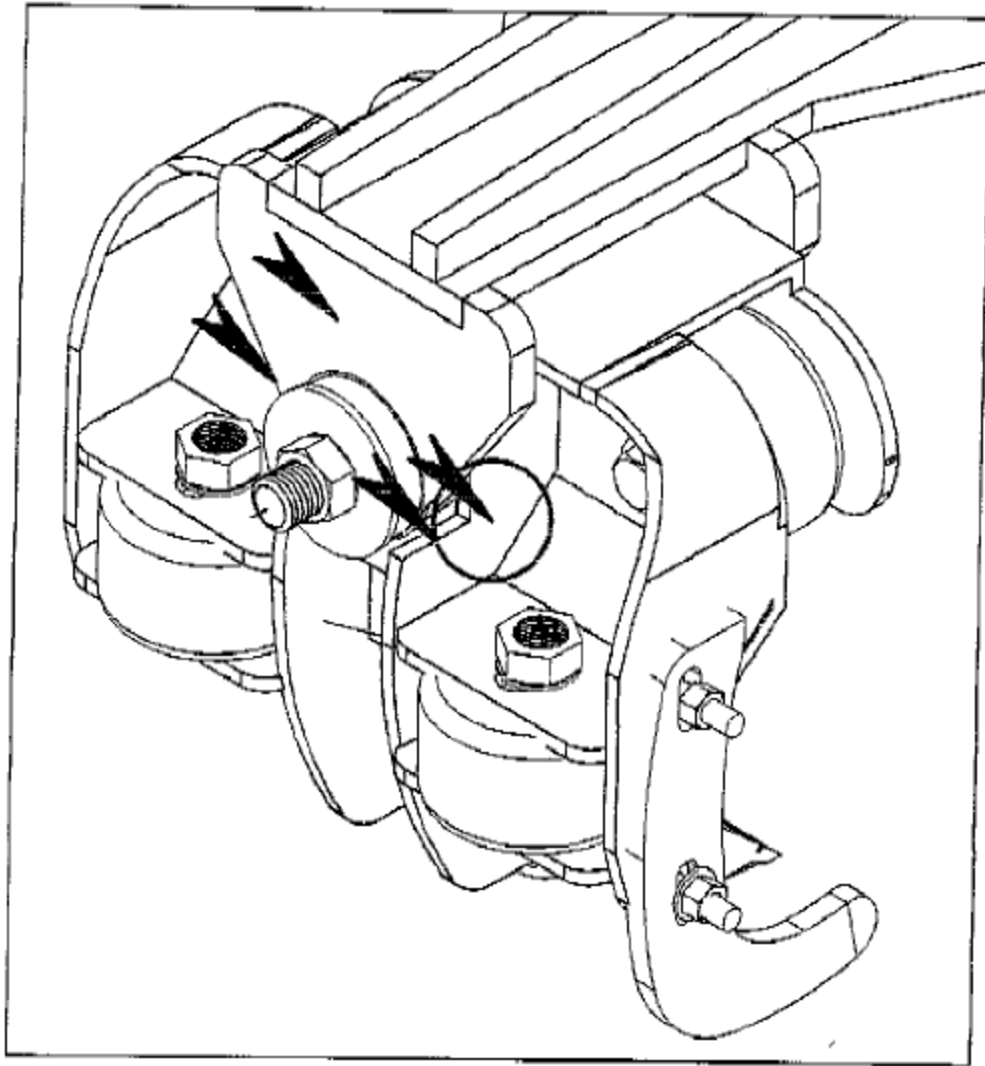
❖ **CRACKING HAS BEEN INDICATED ON 2 WHEEL BOGGY ASSEMBLIES ON ONE RIDE. INSPECT THE INDICATED AREA AND REPAIR IF NEEDED. FAILURE OF THE BOGGY IN THIS AREA MAY CAUSE INJURY.**

1. **Inspect the area indicated on the attached drawing.**
2. **Inspect both inner main boggy plates.**
3. **Use visual and dye penetrant or magnetic flux**
4. **If a crack is found, V out the crack and weld with 7018 rod.**
5. **Add 1/4" doubler plate and weld the perimeter of the doubler plate with 7018 rod.**
6. **Check adjustment of wheels.**
 - **NOTE: Adjusting side and bottom wheels in the station may be causing the cracking. Adjust wheels on curve only.**

Contact Wisdom Industries for Repair instructions or doubler plates.



If you have any further questions, please call Wisdom Industries. Please contact Wisdom if cracks are found so that we may evaluate if further action is needed.



INSPECT EVERY 6 MONTHS (NORMAL USAGE):

1. REMOVE LOOSE PAINT AND GREASE THAT WOULD OBSTRUCT VIEW.
2. INSPECT FOR CRACKS ON THE WHEEL BRACKET ASSEMBLY IN THE AREA INDICATED (2 PLACES EACH BOGGY) AND THE AXLE ASSEMBLY.
3. PAINT BARE METAL AND GREASE AS REQUIRED.
4. REPAIR ACCORDING TO INSTRUCTION AS NEEDED.



WISDOM INDUSTRIES Merino, CO 80741

APPROVED BY:

DESCRIPTION

INSPECTION OF WHEEL BRACKET ASSEMBLY

SCALE: QUARTER

DATE: 02/24/04

EQUIPMENT:

COASTERS/CHINA/DAGON

DRAWN BY:

JJR

DRAWING NUMBER:

9C 025